



Prospectus 2022 - 2023

www.cdcfe.ie

Principal's Welcome

I am delighted that you have picked up our new prospectus.

CDCFE welcomes learners of all ages, abilities and nationalities. Whether you are a school leaver, an adult wishing to upskill in employment or unemployed and wishing to re- enter the labour market or an international student, we offer you a wide range of dynamic full and part-time courses at Certificate, Diploma and Degree level accredited by national and international awarding bodies. On completion of a course at CDCFE, learners may enter directly into employment, or may choose to use their QQI Qualifications to apply for progression to a Degree Programme in Universities and Higher Education Institutes. All of our courses have strong links with industry, professions, Universities and Higher Education Institutes in Ireland and abroad.

Our programmes are delivered by a team of tutors dedicated to the highest standards of teaching and learning in a caring, supportive, safe and friendly atmosphere. Combined with excellent learning facilities, the College offers a climate which fosters learning and development and a strong belief in the ability of all learners to achieve their potential. We are proud of our learner-centred approach, one that places the needs of each learner first and foremost.

Choosing the right course is an important decision. Please visit our website www.cdcfe.ie where you can apply online and for further information that you may find useful. If you have any queries, our Admissions team will be more than happy to assist, please email coolock@cdcfe.cdetb.ie or phone 01 8481400.

Learning is for everyone. Whatever your starting point, you will find a warm welcome in CDCFE. Why not join us at one of our Open/ Information Days and experience it for yourself. I wish you well in whatever course you choose.

Patricia O'Brien-Brennan

Principal

CDCFE is a constituent College of City of Dublin Education and Training Board.

Chief Executive – Dr Christy Duffy

Coláiste Dhúlaigh College of Further Education

CONTENTS

Work Placement and Employer Engagement 4

Information for Full-Time Learners 6

BUSINESS AND TOURISM

Tourism with Marketing 7

Pre-University Business Studies 8

Tour Guiding (National Tour Guide) 9

Entrepreneurship in Creative Industries 10

Office and IT Skills QQ Level 4 11

ART AND DESIGN

Art and Design Portfolio Preparation 12

Architectural Design and Technology Foundation 13

Fashion Design 14

Graphic Design (Visual Communications) 15

Interior Design – 3D Design 16

MEDIA

Creative Writing for Digital Media 18

Media Production – Television and Sound 19

Film Production 20

Journalism & Podcasting 21

Journalism & New Media 22

Animation 23

Photography 24

Social Media Influencer 25

HAIRDRESSING

Hairdressing Pre-Apprenticeship 26

National Hairdressing Apprenticeship (NHA) 27

Barbering – Skills to Compete 28

PERFORMING ARTS

Performing Arts 29

INFORMATION TECHNOLOGY

Computer Science 30

Computer Networking Technologies 31

SCIENCE AND ENGINEERING

Engineering Technology (Pre-Apprenticeship) 32

Preliminary Engineering 33

Pre-University Science (DCU access course) 34

Pre-University Science (Lab. Techniques) 35

SOCIAL SCIENCE AND EDUCATION

Social Care 36

Early Childhood Care and Education 37

Youth Activities Worker 38

Pre-Primary School Teaching 39

Pre-University Psychology 40

OUTDOOR ADVENTURE(SHAKLETON)

Outdoor Adventure Management 41

HEALTH SCIENCE

Occupational Therapy Assistant 43

Pre-University Sport Science 44

Rehabilitation Sport and Exercise 45

Physiotherapy Assistant (Health Service Skills) 46

Health Science (Pre-Nursing) 47

Sport, Health and Lifestyle Coaching 48

Speech and Language Therapy Assistant 49

TOP-UP DEGREES

Top-Up Degree in Film and Television Production 51

Top-Up Degree in Animation 53

Top-Up Degree in Drama 54

ADULTS RETURNING TO EDUCATION

Adult Education Service 57

Day and Evening Courses 58

FULL-TIME VOCATIONAL COURSES (VTOS)

Community Development 59

Craft 60

Horticulture 61

General Learning 62

Nutrition and Lifestyle Coaching 63

Professional Floristry 64

PART-TIME SKILLS TO COMPETE COURSES

Pottery for Beginners 65

English for Speakers of Other Languages (ESOL) 66

Café and Deli Service Skills 67

Health Service Skills 68

Early Childhood Care and Education 69

Barista Skills 70

Tour Guiding 71

General Learning 72

WORK-BASED LEARNING

Traineeship in Manufacturing, Supply Chain and Customer Service Logistics – Work Based Learning 73

National Hairdressing Apprenticeship 74

Skills to Advance Training programmes 75

PROGRESSION

Course Progression Chart 2022/23 78

Index 81

Work Placement (Home and Abroad)

The college works closely with many industries both locally in Ireland and in other parts of the European Union (e.g., Erasmus+ programme) who facilitate our students by giving them access to workplace learning environments. You will then be able to use these experiences to achieve success by building up your network of contacts in the workplace/industry that will open-up the opportunity to release your potential and secure the job of your dreams.

The work experience placement gives you an invaluable opportunity to get hands-on experience of working in your chosen area. Many local employers provide work experience opportunities to our students, some partake in work experience throughout the academic year, while others partake in block placement ranging from 2 – 4 weeks. While on placement, all students are fully insured by the college.

The college continuously liaises with industry and potential employers to keep our courses up to date and ensure that our courses are fit for purpose. In addition to work placement, exposure to your area of industry is facilitated by a combination of site visits, guest speakers and members of professional bodies who visit the college to share their working world with you and to tell you how their journey began. Remember, they were once where you are now!

DO YOU WANT TO GAIN WORK EXPERIENCE ABROAD?

Students from many courses are offered the opportunity of three weeks fully funded international work experience under the Erasmus+ Mobility Programme in the following countries: Finland, Slovenia, France, Italy, the Netherlands, Portugal, Spain and Sweden.

This wonderful opportunity offers 3 weeks work experience in Europe and a certificate of attendance from your international employer. It is fully funded by the European Union.

Our career guidance counsellors are also available to discuss and plan your career options, whether you opt for the world of work or progression to further study.

EMPLOYER ENGAGEMENT

The college continuously develops Employer Engagement to keep up to date with the vocational sectors and to offer students opportunities and beneficial work experience. The college hosts different Employer Engagement events where employers can visit the college and connect with the students. Employers identify the different types of jobs that students can progress into, give an insight to what it is like to work in different industries and identify the skills set they are looking for from a student. They also provide information on recruitment drives at the end of the year.

Students from any vocational area who have graduated from the college may have a business idea and would like to start their own business. If so, we can help as you can apply to do a short programme called 'Entrepreneurship in Creative Industries' to enable you to create a business plan, teach you how to apply for funding and how to market your business idea, product or service.

Create your life plan and we will help you realise it.

Release your potential!



Erasmus+

Information for Full-Time Learners

LOCATION

CDCFE is a constituent college of the CDETB. The college has three campuses located in Coolock, Raheny and Kilbarrack while much of our Outdoor Adventure Management course also takes place in Malahide.

REPUTATION

CDCFE has a long established and admired reputation as a centre of learning. The college has developed an excellent reputation with employers, certifying bodies, students past and present, parents, the local community and other educational institutions to which our students progress. All our courses adhere to the highest Quality Assurance procedures and conform to the demands of the various certifying bodies.

FRIENDLY ATMOSPHERE AND PERSONAL APPROACH

The college prides itself on providing a warm and welcoming environment to all our learners. Students will find our staff members are approachable and accessible and everybody strives to provide a friendly service. The ethos of the college is to focus on the individual needs of each learner that enters the college.

FACILITIES

The college provides canteens, supervised car parking and sport facilities. The college also has many state-of-the-art specialist facilities to support the programmes on offer.

INFORMATION EVENINGS

Our Information Evenings will give prospective students the opportunity to speak with staff in the college and to find out what is involved in each course. Staff in your chosen area of interest will be available to speak with you on each evening.

Keep an eye on our website for information on times and dates.

WEBSITE (WWW.CDCFE.IE)

The most up to date information can be found on the college website. You will also find more detailed information on the college and our courses on the website.

APPLICATION

You can apply for all PLC courses online at www.cdcfe.ie. You can also apply for VTOS and SKILLS TO COMPETE courses online at www.cdcfe.ie or by contacting the college. All courses are free for those who are over 21 and in receipt of most social welfare payments. To check your eligibility please see www.cdcfe.ie

PART-TIME PROGRAMMES

While the majority of our courses are full-time programmes, we also offer a range of programme options for adults who want to return to education on a part-time basis, in the day or evening. These programmes are aimed at people who need Adult Basic Education, Upskilling, Back to Education courses or specific interest and hobby courses which are offered in the Adult Part-Time Day and Evening Courses. Further information on access to these courses is available in the Adults Returning to Education Section.

INTERVIEWS AND APPLICATIONS

While applicants may receive a provisional offer of a place, the college reserves the right to interview for certain courses.

Should you have any queries about your course please email coolock@cdcfe.cdetb.ie

COURSE AWARDS AND CONTENT

Course awards and content and other course details can change without notice. www.cdcfe.ie will have the most up to date details.

COURSE CHARGES

There are no fees for tuition, however, in line with provision in the third level sector, charges exist to cover the costs of the following items: books, some equipment, uniforms/clothing, student services, Student Union, examination fees and registration charges by professional bodies. Check website for individual course charges.

INTERNATIONAL APPLICANTS

The college welcomes applications from qualified international applicants. International (non-EU) learners must comply with Irish immigration requirements and must present either a student visa or a letter of permission to remain in Ireland, issued by the Immigration Section of the Department of Justice. Non-EU learners in certain circumstances may be required to pay a course fee for their course. For further details, please contact the college.

Learners are advised that to benefit from their chosen course they should be proficient in written and spoken English. Learners may be required to do an English Language proficiency assessment as part of the interview process.

Information for Full-Time Learners

GRANTS

Students undertaking any full-time Further Education course may apply for a means tested maintenance grant. Application forms are available from SUSI www.susi.ie. Students from designated disadvantaged partnership areas may be eligible for financial assistance towards course charges.

MATURE STUDENTS

The number of mature students attending CDCFE is increasing each year and at present constitutes a significant proportion of our total numbers. Mature students are very welcome, and our Learner Support Service will pay particular attention to their learning needs.

Full-Time Vocational Courses (VTOS) offer unemployed adults the opportunity of returning to full-time education while remaining in benefit. Check your eligibility on www.cdcfe.ie

Part-time Skills to Compete courses give unemployed adults the opportunity of returning to part-time education while retaining their benefits. Skills to Compete is an initiative to support those who have lost their jobs as a result of COVID-19 and wish to re-enter the workforce.

CAREER GUIDANCE COUNSELLING

The Guidance and Counselling Team aims to provide a confidential and non-judgemental service where students have the space to express and clarify their own particular concerns in relation to career, educational and personal issues.

EDUCATIONAL SUPPORTS

The college is committed to providing an equal opportunity learning environment to all its learners. Students who are entitled to special accommodation in examinations or who have specific learning needs should contact the Disability Support Officer, Angela Flynn at (086) 0229342 / 01 8851381 or email angela.flynn@nln.ie.

STUDENT SERVICES - SPORTS AND CULTURAL

Student Services are with you on your journey in Coláiste Dhúlaigh College of Further Education from the day you start until your graduation. Our role is to focus on extra-curricular and non-curricular activities, to support clubs and societies, to secure student deals (with local amenities and businesses) and provide an information hub should you have any queries.

LEARNER SUPPORT SERVICE

The focus of this service is to improve student performance through the development of study skills. The Study Support Service offers individual support with course work, assignment writing and study techniques. Tutors are available for one-to-one tuition, workshops and small group tutorials that support assignment writing.

DISCLAIMER

Information for all learners: formation of each course is subject to sufficient enrolment numbers being met. All course modules are subject to change.

Degree courses are run under part-time provision and formation of courses are subject to sufficient numbers enrolling.

Coláiste Dhúlaigh College of Further Education reserves the right to revise, amend or delete courses and other details published in this prospectus. When the college offers a provisional place to an applicant it also reserves the right to hold interviews with and check academic results of the applicant at a later date. The number of places on offer on each course may vary from year to year and a provisional place does not guarantee a place on a course.

Some courses may involve remote teaching in the next academic year depending on COVID-19 developments and instructions from the HSE.

The college reserves the right to cancel a course or limit the number of places on a course at any stage in the year.

Patricia O'Brien - Brennan – Principal

Coláiste Dhúlaigh College of Further Education

Tourism with Marketing

QQI Award Tourism with Business Level 5 (5M5011), and Level 6 (6M5012)



This two-year course introduces students to all the main components of the Tourism Industry, including competencies in dealing with and managing people as well as the development of practical skills. Students will be equipped with the necessary and varied skills for employment in this increasingly important and expanding industry. There is also the opportunity for further study with TU Dublin for students who are successful in the second year of this course.

In addition to providing a good grounding in the Tourism Industry, students will have the opportunity to obtain the Amadeus Global Distribution Systems (GDS) examination which is one of the most recognised GDSs used worldwide.

COURSE CONTENT

YEAR 1

Customer Service, Tourism Principles and Practice, Marketing, Appreciation of Irish Culture, Tourism Information and Administration, Word Processing, Work Experience or Personal Professional Development, Global Distribution Systems (Amadeus).

YEAR 2

Tourism Policy and Practice, Heritage, Human Resources Management, Work Experience or Personal Professional Development, Customer Service, Event Management, Digital Marketing, Marketing Management, Global Distribution Systems (Amadeus).

CERTIFICATION

Year 1: QQI Level 5 (5M5011)

Year 2: QQI Level 6 (6M5012)

ENTRY REQUIREMENTS

Leaving Certificate, Leaving Certificate Applied candidates should have a Distinction profile. Students who achieve a full award in first year are eligible for entry to second year. Candidates with a relevant full QQI Level 5 certificate may apply for direct entry into second year. Mature students are welcome to apply.



CAREER OPPORTUNITIES

This course will qualify you to work in many aspects of the Tourism Industry including Front of House operations in the hotel or heritage business. Students may also take up the option of furthering their careers through additional study with TU Dublin.

COLLEGE LINKS

Successful completion of the second year of the programme offers the opportunity of advanced entry into TU Dublin degree programmes.

Students may also apply for entry into tourism related courses in a variety of colleges including TU Dublin and other Institutes of Technology throughout the country. Please refer to our Progression Routes section for further details.

Pre-University Business Studies

QQI Award: (Level 5 – 5M2102, Level 6 – 6M4587)



This is a two-year course designed to encompass a broad range of business-related subjects that create an understanding of the scope of skills and activities needed to compete successfully in the business world. This course covers all major business areas and topics and provides a comprehensive knowledge of each of the major functions of business. The structure ensures that students have the widest possible range of career, employment and higher education options open to them on completion of their studies.

Classes are held in our Kilbarrack Campus which is within easy reach of Kilbarrack DART stations and the 17A bus terminal

COURSE CONTENT

YEAR 1

Business Law, Business Administration, Marketing, Statistics, Bookkeeping, Spreadsheet Methods, Work Experience, Academic Writing, Communications.

YEAR 2

Business Management, Finance, Human Resource Management, Employment Law, Applied Economics, Customer Service, Personal Professional Development, Mathematics (QQI Level 5).

CERTIFICATION

Year 1: Certificate in Business, Level 5 (5M2102).

Year 2: Certificate in Management, Level 6 (6M4587).

DURATION

Two years.

ENTRY REQUIREMENTS

Entry into Year 1 of our Business Studies Certificate require a pass in The Leaving Certificate (Five passes, including minimum O5/H7 in English and O6/H7 Mathematics). Students who successfully complete all modules in Year 1 may progress to Year 2. To be eligible for second year, candidates will require a relevant full QQI Level 5 certificate. For students aged 23 and over, Leaving Certificate requirements may not apply where one has previous business-related experience.

CAREER OPPORTUNITIES

Accountancy, Sales and Marketing, Business Administration, Banking, Purchasing Management, Human Resource Management, Customer Care.

COLLEGE LINKS

DCU Bachelor of Business Studies (DC 111) - Graduates with a Distinction Profile can apply for advanced entry into second year of DCU's business degree.

Students with a full QQI Level 6 award are eligible for entry into second year of the following NCI Degree courses:

- ▶ NCI BA (Hons) in Business;
- ▶ NCI BA (Hons) in Human Resource Management;
- ▶ NCI BA (Hons) in Marketing Practice.

Students may also apply for entry into business related courses in a variety of colleges including TU Dublin and other Institutes of Technology throughout the country. Please refer to our Progression Routes section for further details.



Tour Guiding (National Tour Guide)

QQI Award: National Tour Guiding Level 6 (6S20232)



This special purpose award is the new professional qualification for tour guides that replaces the former system of badge certification by Fáilte Ireland. On completion of the course, students will be equipped with the necessary organisational and communication skills to participate effectively in the expanding tourism industry. This is a national award and successful candidates will gain certification that will enable them to work in all regions of Ireland. The course is delivered through an integrated mix of on-campus lectures, off-site visits to key tourist attractions and self-directed learning over three days each week.

COURSE CONTENT

SEMESTER 1 (12 WEEKS)

Irish Tour Guiding, National Tour Management, Irish Natural Culture and Heritage. On completion of National Tour Guiding – Special Purpose Award Level 6: 6S20232 learners will progress automatically into Entrepreneurship in Creative Industries to give individuals the opportunity to develop their business idea.

SEMESTER 2 (12 WEEKS)

Entrepreneurship in Creative Industries will complete: Start Your Own Business, Entrepreneurship, Digital Marketing, and Studio/

Work* Practice. Workshops are an important element of this course. They will be facilitated by successful entrepreneurs and experts from different industry.

CERTIFICATION

QQI Level 6.

ENTRY REQUIREMENTS

Successful completion of QQI Level 5 (or above) in a related field of study. Mature students with experience in the Tourism Industry and those who are considering a change of career may also be eligible. A deep interest in the heritage and culture of Ireland and excellent interpersonal skills are also strongly advised.

CAREER OPPORTUNITIES

This course will qualify successful participants to work as a self-employed tour guide or to seek employment in the Tourism/Heritage Industry throughout Ireland. It also delivers key skills to those who wish to participate in business and promotional aspects of the industry.



Entrepreneurship in Creative Industries

QQI Minor Award (5M2102)



If you want to start your own business or develop a skill that you have and turn it into a small business, then this course is for you. Coláiste Dhúlaigh College of Further Education has developed this 12-week part-time course for individuals who wish to start their own business in many different sectors including Advertising and Marketing, Architecture, Interiors, Sport, Leisure, Wellbeing, Crafts, Product design, Graphic design, Fashion design, Film, TV, Video, Photography, Animation, IT software, Apps, Computer Services, Publishing, Creative Writing, Illustrations, Music, Performing, Visual Arts, Tour Guiding, Barista, etc.

This 12-week course will give individuals the opportunity to develop their business idea, skills, product or service and to equip them with the knowledge, skill and confidence to start their own business, create a business plan, to apply for funding, and market themselves. All applicants who present for this course will be given individual guidance by qualified teachers who are in a position to make recommendations as to which courses may best suit their learning needs.

Participants on the course come from various backgrounds and will work together in a shared office hub with facilities available to help them perfect their business while being supported by mentors. The course will be delivered through a combination of lectures in Start Your Own Business and Marketing.

COURSE DURATION

12 weeks

COURSE CONTENT

Start Your Own Business, Entrepreneurship, Digital Marketing, Studio/Work* Practice.

Workshops are an important element of this course. They will be facilitated by successful entrepreneurs and experts from different industry.

ENTRY REQUIREMENTS

Interview – showcase your business idea.

PROGRESSION

Create your own business in the Creative Industries.



Office and IT Skills Level 4

QQI Level 4 Award – 4M2070 Office Skills



This QQI level 4 course will equip learners with the basic office and computer skills needed in order to allow them to progress to further education and training and eventually into employment in a range of career pathways.

COURSE CONTENT

Communications 4N0689, General Office Skills 4N1116, Business English 4N1108, Business Calculations 4N2279, Computer Applications 4N1112, Word Processing 4N1123, Customer Service 4N1989, Reception Skills 4N1867, Career Preparation, Planning 4N21060

CERTIFICATION

QQI Level 4

DURATION

1 Academic Year

ENTRY REQUIREMENTS

Early school leavers that need a foundation to pursue further education or employment.

Leaving Certificate Vocational programme (LCVP), and the Leaving Certificate Applied programme (LCA), QQI Level 4 course.

All applicants whose first language is not English will be tested prior to acceptance.

Related course – Retail Skills 4M1998 / Employment Skills 4M0857 / General Learning 4M2010



Art and Design Portfolio Preparation

QQI Award (Level 5 - 5M1985)



This course is designed to prepare students for entry to third level art colleges both in Ireland and abroad. Emphasis is placed on research and development methods in both practical and academic subjects relevant to Art and Design practice.

This approach facilitates the development of a balanced portfolio that demonstrates the student's individual ideas and creativity. While preparing their individual portfolio, students on the course cover the QQI Level 5 Art Award which is recognised for entry to third level art colleges such as NCAD, TU Dublin and ITs nationwide. This award can be used instead of the minimum Leaving Certificate requirements for third level college entry.

COURSE CONTENT

Observational research and exploration of ideas and materials through Drawing, Painting, Illustration, Combined Materials/Design, Sculpture, Contextual Studies, Digital Photography, Computer Illustrated Graphics, Communications, Work Experience, Portfolio Editing and Evaluation.

CERTIFICATION

QQI Level 5.

DURATION

One year.

ENTRY REQUIREMENTS

Leaving Certificate or LCVP (to include O6 / H7 English) or Merit Award LCA or Merit Award QQI Level 4

Art work - Images of four pieces of observational work completed in the last two years. Include colour work and drawings. 3D work may also be included.

The portfolio preparation course welcomes mature students whose eligibility is assessed on an individual basis.

COLLEGE LINKS

Graduates of this course may also apply for entry to higher and advanced certificate and degree programmes at national Institutes of Technology, Technological Universities, Universities and Art Colleges at home and abroad such as,

NCAD (National College of Art + Design), TU Dublin, IADT (Institute of Art, Design + Technology, Crawford College of Art + Design, LSAD (Limerick School of Art + Design), TUS, and IT Carlow; London, Edinburgh, Utrecht, Berlin.

Students can use this major Level 5 Art Award (5M1985) to apply to colleges through the CAO.



Architectural Design and Technology Foundation

QQI Award: (Level 5 – 5M2208)

® Raheny

Architecture is a rewarding field of work and study that calls for both creative and technical skill in the design of buildings and environments. An Architect's work primarily focuses on creative, conceptual and detailed design of buildings. An Architectural Technologist works more on the technical design for construction. This course is designed to provide learners with the opportunity to develop skills and to prepare a portfolio in Architecture or Architectural Technology to further their studies at degree level.

The Architectural pathway emphasises conceptual and spatial design, theory of architecture and model making. The Architectural Technology pathway develops abilities in technical design. While preparing their individual portfolio, students on the course cover the QQI Level 5 Design Award which is recognised for entry to third level art colleges such as TU Dublin and ITs nationwide in lieu of minimum Leaving Certificate requirements for third level college entry.

Students may diverge in their choice of progression route across the year, and our students have also applied successfully to Product Design and Interior Design courses in third level colleges.

COURSE CONTENT

Design Skills, Architectural Drawing, Drawing, Combined Materials, Computer Aided Design (CAD), Appreciation of Architecture and Design, Communications, Work Experience.

CERTIFICATION

QQI Level 5.

DURATION

One year.

ENTRY REQUIREMENTS

Leaving Certificate/LCVP / LCA / QQI L4 applicants. We welcome applications from mature students. Entry is by interview with small portfolio showing samples of work e.g. drawings, photographs, design work.

CAREER OPPORTUNITIES

Architect or Architectural Technologist in Architectural/ Engineering practices or in local authorities, Architectural Technology practices and Facilities Management, Interior Architecture, Product and Furniture design.practices or in local authorities, Architectural Technology practices and Facilities Management, Interior Architecture, Product and Furniture design.

PROGRESSION

QQI LEVEL 6 AND HIGHER NATIONAL DIPLOMA

Successful graduates may gain entry to HND courses in Design in CDCFE.

DEGREE LEVEL

Architecture:

Graduates of this course will be considered for progression onto the Level 8 Honours Degree in Architecture in TU Dublin, UCD* and the University of Limerick*, WIT, University of Ulster, Queen's University and other programmes that take into account portfolio work in their application processes in Ireland and the UK.

Architectural Technology:

Graduates of this course will be considered for progression onto the Level 8 Honours Degree in Architectural Technology in TU Dublin based on grades achieved on this course. They may also apply to Architectural Technology degree programmes such as IT Carlow, Waterford Institute of Technology and other Irish and UK educational institutions.

* Require Leaving Certificate points for entry.



Fashion Design

QQI Award Fashion Design Level 5(5M3865) and Fashion Industry Practice Level 6 (6M4508)



This course prepares the student for the vibrant, creative and challenging world of fashion. The course promotes awareness of current fashion industry trends, along with an understanding of the importance of good presentation skills.

You will learn research skills, how to produce initial design ideas and how to develop designs through to a finished garment. The studios are equipped with high spec manufacturing equipment, computers and all software needed to generate design work. Tutors and contemporary designers from the fashion world are at hand throughout the course to support and develop your skills.

Throughout the duration of this course, students will work on their own collections for the end of year show. The finished design will not only demonstrate a comprehensive knowledge of fashion design but also of tailoring and garment finishing to a high standard. Successful graduates have a variety of career path opportunities: third level courses, a career within the industry or setting up their own business.

COURSE CONTENT

Garment Construction, Pattern Drafting, Design Skills, Fashion Illustration, Colour Forecasting, Trend Forecasting, Buying and Merchandising, Fashion in a Historical and Contemporary Context, Fashion Styling, Photoshoot Direction, Fashion Design, Drawing.

CERTIFICATION

QQI Level 5 and level 6..

DURATION

Two years.

CAREER OPPORTUNITIES

Fashion Design, Image Consultancy, Fashion Illustration, Millinery, Design Management, Fashion Styling, Retail, Merchandising, Buying, Trend Forecasting and Costume Design for Film, Theatre and Television..

ENTRY REQUIREMENTS

Leaving Certificate or LCVP (to include O6 / H7 English) or In general, the Leaving Certificate (including LCA) is required. Exceptions can be made for mature students. Students applying for the course will be asked to attend an interview, to which they will bring samples of creative work (drawings, photographs, and designs).

Level 6 – Leaving Certificate (including LCA), QQI level 5 in Fashion/ or Art and Design related qualification, mature and postgraduate students welcome.

PROGRESSION

Graduates of this course may also apply for entry to higher education. Students can apply for entry with their portfolio for Fashion Design degree courses in all the major colleges throughout Ireland, the UK and abroad including entering in Year Two in the following colleges: NCAD, TU Dublin (Visual Merchandising), Institute of Art Design and Technology Dun Laoghaire (Costume Design), Limerick Institute of Further Education, The National Tailoring Academy at Louis Copeland, Griffith College Dublin, The University of Ulster (BA Hons Textile Art, Design and Fashion), Istituto Marangoni School of Fashion and Design, London, AMFI Amsterdam Institute of Fashion and year two in NCAD and Limerick Institute of Further Education.



Graphic Design (Visual Communications)

QQI Award Graphic Design Level 5 (5M1995) and Illustration Level 6 (6M5150)



Our foundation course in Graphic Design (Visual Communications) has been developed to help you build a solid graphic design/illustration portfolio that will enable you to progress to further study either at Higher National Diploma (HND) or Degree level (BA Hons).

You will develop traditional visual communication skills with the latest graphic design software such as Adobe Photoshop, Illustrator and InDesign. You will be working with a team of experienced Art and Design tutors who will help you to develop your creative problem-solving skills. The areas that you will cover are Drawing, Printmaking, Digital Photography, Illustration, Graphic Design, Typography and Design Principles. Students have a busy schedule all year with regular trips to galleries and museums. Visiting lecturers in areas such as bookmaking, typography and drawing also run practical workshops. These extra classes are given at no extra cost and are hosted by experienced visiting professionals.

COURSE CONTENT

YEAR 1

Graphic Design Skills, Design Skills, Drawing, Illustration, Computer Illustrated Graphics, Digital Photography, Appreciation of Art, Craft and Design, Work Experience and Communications

YEAR 2

Drawing, Typography, Computer Illustrated Graphics, Illustration Skills, Web Authoring, Personal and Professional Development, Communications, Design Skills.

CERTIFICATION

QQI Level 5 Certificate in Graphic Design 5M1995 and level 6.

DURATION

Two years.

WORK EXPERIENCE ABROAD

Some students will have an opportunity to do their work experience abroad. In the past, students have gone to Budapest and Malta as part of the Erasmus project.

ENTRY REQUIREMENTS

Leaving Certificate and interview (with portfolio of art and design work). Mature and postgraduate students are also welcome to apply. Prior experience in related areas will be considered.

PROGRESSION

QQI Level 6 Design students can apply directly to any of the major Art and Design Colleges throughout the country for entry into Visual Communications degree level courses.



Interior Design – 3D Design

QQI Award Interior Design Level 5 (5M5054) and Level 6 (6M5127)



Coláiste Dhúlaigh College of Further Education is offering a 3 Year Interior Design programme tailored to meet the design industry's needs. We introduce students to the world of 3D Design including commercial and domestic Interior Design, Architectural Design, furniture, lighting and many other facets of 3D Design. The Interior Design course is based in the Raheny Campus which is home to all of our Art and Design courses.

Students gain valuable experience working on live projects, industry workshops and competitions. Work placement is encouraged throughout the course and we work with the Erasmus programme to send students abroad on work placement. Over the 3 years students will learn all skills necessary to work as an Interior Designer. On completion of the 3 year course students will leave with a professional standard portfolio that can lead to employment or advanced entry into the 2nd or 3rd year of a third level degree programme.*

We ensure students have access to current industry standard software and equipment. We have small class sizes and we design a timetable that facilitates a high level of contact time with tutors. We have top of the range colour printing and plotting and all students will receive a design pack with materials needed to work on projects throughout the course

COURSE CONTENT

This course offers a wide range of modules that cover all areas of Interior Architecture and 3D Design. We also focus on developing drawing skills, presentation and 3D visualisation skills which enables students to produce professional presentations of their design projects. We encourage creativity and design thinking. We believe students should aspire to be innovative designers. We design projects that deliver for our students by ensuring a healthy balance of creative exploration and technical knowledge.

YEAR 1

Drawing, Design, Appreciation of Art and Design, Computer Aided Design, Technical Drawing, Computer Illustrated Graphics. Furniture and Fittings, Colour and Light, Work Experience, Communications.

YEAR 2 and 3

The second and third year of the course covers 14 modules over the two years e.g. Advanced Interior Design, Professional Practice, Collaborative Project, Computer Aided Design 2D and 3D, Critical Studies, Surveying, Technical Drawing, 3D Modelling and Rendering, Presentation Techniques, Computer Illustrated Graphics. We also focus on professional development.

In this area of the course we deliver briefs that give students an insight into the design industry and the challenges involved in design development, communicating ideas to clients and the ability to apply design thinking to solve problems. After the two years students will also get the opportunity to showcase their work at an end of year exhibition which is held at a high profile venue in Dublin.

WORK EXPERIENCE ABROAD

Some students will have an opportunity to do work experience with interior design companies abroad. In the past students have gone to Budapest, Malta and Portugal as part of the Erasmus project. This is an exciting opportunity for our design students and the programme is fully funded.

SOFTWARE

Current industry standard software is provided throughout the college including AutoCAD 2D, Google Sketchup and VRay, Adobe Illustrator, Adobe Photoshop.

CERTIFICATION AND DURATION

This is a 3 year programme: QQI Level 5, 1 year and Pearson BTEC Higher National Diploma, 2 years.

ENTRY REQUIREMENTS

Leaving Certificate, Leaving Certificate Applied and interview. Mature and postgraduate students are also welcome to apply. Students can also be considered for entry into Year 2 from September 2022. Prior experience in related areas will be considered.

CAREER OPPORTUNITIES

Interior Design and Architectural Practices, Interior Design Consultant, Display and Merchandising, Interior Retail Management, Interior Retail Buying, Product Design, Furniture Design, Interior Styling and Merchandising, Retail and Exhibition Design, Set Design and Design for Leisure, Health and Education Industries.

PROGRESSION TO DEGREE LEVEL

Advanced entry to 2nd and 3rd year BA (Hons) Interior and Furniture Design courses are available in TU Dublin, advanced entry to Visual Merchandising in TU Dublin, Griffith College, Sligo Institute of Technology, one year top-up degrees with University of Wolverhampton and many other UK universities.

*All advanced entries depend on final grades and standard of portfolio.



Creative Writing for Digital Media

QQI Award Creative Writing Level 5 (5M5048)



This course is designed for anyone with an interest in Creative Writing and Storytelling. Students will explore various aspects of writing and will be facilitated in developing both written and digital content for online platforms.

The course will focus on developing writing skills for fictional work as well as creation of promotional digital content for multi-platform delivery. Classes will be delivered in a relaxed environment and learners will be given the opportunity to build on existing and/or new story ideas.

The one-year QQI Level 5 course will encourage students to share and critique ideas in a supportive setting. The skills to create media content to complement written material will be taught, giving students the necessary tools to make self-promotional material for digital storytelling.

COURSE CONTENT

Media Analysis, Creative Writing, Writing Skills for Journalism, Script Writing, Communications, Work Practice, Image Processing, The Internet.

DURATION

One year.

ENTRY REQUIREMENTS

Leaving Certificate or equivalent is an advantage but not essential. Mature students are welcome to apply.

PROGRESSION ROUTES

Graduates can progress to Higher National Diploma in Creative Media Production (Film or Media Production), or QQI Level 6 in Journalism & New Media, followed by a Top-Up BA (Hons) in Film Production accredited by University of Wolverhampton and delivered on site in Coláiste Dhúlaigh College of Further Education. Graduates can also progress through the usual QQI routes on the National Framework of Qualifications (NFQ).

Media Production – Television and Sound

QQI Level 5 and Higher National Diploma



If you are someone who makes videos or podcasts, records music, takes photographs or just has a general interest in the media, this is the course for you. Our alumni are Directors, Producers, Sound Designers, Videographers, Musicians, Editors, Comedians, Advertising Executives, Lighting Experts and more besides. We engage with the Media Industry and often adjust the course to ensure that our graduates are prepared for work in media. We have a HD Television Studio and a professional Radio Recording Studio. We put equipment in your hands early and often, encouraging you to learn by doing.

COURSE CONTENT

YEAR 1 (QQI Level 5)

Radio Programme Production, Documentary Photography, TV Editing, Film Production, Media Analysis, Communications and Personal Professional Development.

YEAR 2 (Higher National Certificate in Creative Media Production)

Audio Practices, TV Studies, Creative Media Industry, Single Camera Techniques, Personal Professional Development, Individual Project, Editing for Film & Television

YEAR 3 (Higher National Diploma in Creative Media Production)

Documentary, Narrative, Collaborative Project, Producer/Director, Social Media Practice, Advance Television Studies, Personal Professional Development.

Top-up Degree

If you want to continue to develop your career with us, we offer a one-year Top-up degree in conjunction with the University of Wolverhampton (BA Hons Film and Television Production) which is delivered in our college. Students who achieve a Merit profile in their HND are eligible.

CERTIFICATION

QQI Level 5, Higher National Diploma, BA (Hons).

DURATION

3 Years (Plus optional one-year Top-up Degree).



ENTRY REQUIREMENTS

Leaving Certificate (including LCA) is an advantage. Applicants may also be asked to attend an interview. We encourage students to bring a sample of work to the interview. This could be anything you have written (e.g. script, story, poem, school essay), photographs you have taken (either on phone or camera), or any other media work you would like to show. You should also be prepared to discuss your favourite TV shows/music/films etc. Genuine Media interest should be shown at the interview. Mature Students are welcome to apply.

CAREER OPPORTUNITIES

Radio and Sound Recording, Music Business, Advertising and Public Relations, Graphic Design, Publishing, Photography, Television Production and Broadcast, Podcasting, TV Graphics, Interactive Media, Film Production, Publishing, Post-Production, Sound for Film and TV, Computer Game Sound Design.

Film Production

Higher National Diploma in Creative Media Production (Film)



This two-year course in Film Production offers a thorough study of film through both practical and academic avenues. Students will study key practical areas such as Scriptwriting, Directing, Producing, Sound, Lighting and Editing all of which will culminate in the creation of their own films. These areas are complemented by the study of Film History, Film Theory and Film Industries

Damien O'Donnell, BAFTA award-winning director of *East is East* is a graduate of CDCFE. Damien has also directed films such as *Heartlands* and *Inside I'm Dancing* and is a prolific TV and Cinema commercial director. As patron of the Film Production course, Damien will visit the college once a year to give a keynote lecture to Film Production students.

COURSE CONTENT

YEAR 1

Scriptwriting, Cinematography, Sound Recording, Editing, Post-Production Sound, Individual Film Project, Creative Film and Media Industries, Professional Practice for the Film Industry, Film Studies.

YEAR 2

Advanced Techniques in Camera, Lighting, Sound Recording, Editing and Post-Production Sound, Collaborative Film Project, Documentary, Personal Professional Development, Advanced Film/TV Studies.

CERTIFICATION

Higher National Diploma, leading to BA (Honours) awarded by University of Wolverhampton.

Students who complete this course with a Merit profile are eligible to apply for the BA Hons in Film and Television Production in Coláiste Dhúlaigh College of Further Education. Progression to other UK universities is also possible.

DURATION

Two years.

ENTRY REQUIREMENTS

Leaving Certificate is an advantage but not mandatory. Mature students, and those without a formal education, are also welcome to apply. Spaces are limited on the course, therefore acceptance criteria may be requested. Applicants may be asked to demonstrate their interest in the media by presenting a portfolio of their work at an interview.



CAREER OPPORTUNITIES

Scriptwriting, Directing, Producing, Editing, Cinematography, Sound, Research, Education, Marketing.

COLLEGE LINKS

Entry into final year of third year degree programmes in a number of UK universities is possible. However, as stated above, completion of this course enables you to apply to complete the BA Hons in Film and Television Production in Coláiste Dhúlaigh College of Further Education.

Journalism & Podcasting

Media Production QQI Level 5 (5M18518)



Have you always dreamed of having your own podcast? Do you have a story to tell? This new and exciting Journalism and Podcasting course aims to empower students to produce creative stories in a way that informs, educates and entertains.

This one-year course will develop journalism industry skills for use in a multi-platform environment. Students will learn various ways of storytelling including podcasting, radio, video, print, and online publication. Students on this course will be prepared for a career in multi-media journalism, learning key skills such as research, content creation and podcast production.

COURSE CONTENT

Radio Podcast Documentary Production, Digital Editing, Political Studies, Digital Video Processing & Production, Writing Skills for Journalism, Media Analysis, Communications, Personal & Professional Development

CERTIFICATION

QQI Level 5 award in Media Production 5M18518.

DURATION

One year.

ENTRY REQUIREMENTS

Leaving Certificate or equivalent is preferable. Mature students are welcome to apply.

PROGRESSION

Graduates can progress to Journalism & New Media QQI level 6 at CDCFE, or to a range of national courses through the QQI/CAO system.

HOW TO APPLY

Apply online at www.cdcfe.ie



Journalism & New Media

Media Production QQI Level 6 (6M5130)



The Journalism and New Media course aims to empower students to tell their stories in ways that inform, educate, and entertain their audience.

In a rapidly changing media environment the core skills of story selection, investigation, fact checking, and clarity of message are more needed than ever. This one-year course aims to align traditional journalistic skills with modern and varied ways of storytelling, including; podcasting, radio, video, print, and online publication.

Careers in journalism revolve around the key skills of research and writing but strong communication skills are in demand in copywriting, corporate communications, public relations, and social media specialists.

COURSE CONTENT

Media Ethics and Legal Framework, Media Industry Awareness, Communications, Personal & Professional Development, Digital Imaging, Editing Practice & Techniques, Radio Documentary Production, Digital Video Processing & Production, Script Writing for Film & TV Drama.

CERTIFICATION

QQI Level 6 award in Media Production (6M5130).

DURATION

One year.

ENTRY REQUIREMENTS

QQI Level 5 certificate or equivalent. Mature students welcome.

PROGRESSION

After this course students can pursue a career in Journalism or Media. Students may also progress to participating Higher Education Institutions (HEIs) through the QQI Higher Education Links Scheme.



Animation

QQI Award Art Level 5 (5M1985), Higher National Diploma in Art & Design (Art Practice)



The course is designed to prepare learners for a professional career in Animation and related fields. Learners study fundamental skills and develop their knowledge using both traditional techniques and the latest computer technology. Areas covered include Animation Principles, Experimental Animation, Stop Motion Animation, Life Drawing, 2D Digital Animation, 3D Digital Animation, Special Effects, Compositing, Film and Critical Studies, Layout, Scriptwriting, Character Design and Storyboarding.

COURSE CONTENT

YEAR 1 (Animation Foundation QQI Level 5)

Drawing for Animation, Animation Layout Design, Image Processing, Appreciation of Art, Craft and Design, Life Drawing, Sculpture, Painting, Work Experience, Communications.

YEAR 2 and 3 (HND in Animation)

Individual Project, Visual Narratives, Media Practices, Material Practices, Screen Based Practices, Techniques and Practices, Contextual Studies, Professional Development, Professional Practice, Applied Practice Collaborative Project, Advanced Art Practice Studies, Moving Image, 3D Modelling and Rendering, Advanced Life Drawing.

BA (Hons) Animation

This Top-up degree is taught on campus at CDCFE, Coolock and validated by University of Wolverhampton. For entry criteria and further information please see Top-up Degree page.

CERTIFICATION

QQI Award Level 5, HND, BA Hons.

DURATION

3 or 4 years with BA (Hons) Degree option.

ENTRY REQUIREMENTS

Leaving Certificate (including LCA) is an advantage but not mandatory. Mature and postgraduate students are also actively encouraged to apply for this course. Applicants may be asked to present a portfolio of their work.



CAREER OPPORTUNITIES

Animation Studio Production, Development, Compositing and Post Production, Illustration, Graphic Design, Film, Television, Multimedia, Advertising, Computer Games Industry. Graduates have gained employment in Irish companies such as Brown Bag Films, Boulder Media, TreeHouse Republic, Jam Media, Magpie 6 Media, Cartoon Saloon, Kavaleer, Gingerbread Animation, Pewter Games, Studio Powwow.

PROGRESSION TO DEGREE LEVEL

If students complete a HND with a Merit profile they are eligible to apply for a one-year Top-up Degree in CDCFE (BA Hons in Animation awarded by the University of Wolverhampton) or advanced entry to BA (Hons) Animation, IADT Dun Laoghaire and BCCE Ballyfermot.

Photography

QQI Award Photography Level 6 (6M3732)



Photography students in CDCFE will build on previous experience to apply their skills in the areas of technique and vision to an advanced level suitable for employment, starting a business or further study. Students are encouraged to blend artistic, documentary or journalistic work into a portfolio reflecting their own personal style. Students will engage with an audience through exhibiting and presenting their work.

This course gives students the opportunity to acquire the principles, techniques and creative skills needed for a career in the Photography Industry. The course interweaves acquiring digital and visual skills for photography along with real world practical projects.

COURSE CONTENT

History of Photography, Documentary Photography, the Art of Colour Photography, Digital Photography, Digital Imaging, Arts Event Management, Personal and Professional Development, Communications.

CERTIFICATION

QQI Award Level 6.

DURATION

One year.

ENTRY REQUIREMENTS

QQI Level 5 Certificate in a related area. Mature and postgraduate students are also actively encouraged to apply for this course.

CAREER OPPORTUNITIES

There are career opportunities in a variety of areas including Newspapers/Magazines, Advertising, Websites, Corporate Publications, Weddings, Family Occasions, Events etc.

PROGRESSION TO DEGREE LEVEL

QQI Level 6 Photography provides an ideal platform for graduates to apply for advanced entry to the degree programmes in Photography in TU Dublin, IADT Dun Laoghaire or Griffith College among others (subject to portfolio submission).



Social Media Influencer

QQI Award in Multimedia Production (Level 5 5M2146)



A Social Media Influencer is a user of social media who has established credibility in a specific industry. They have access to a large audience and can persuade others by virtue of their authenticity.

On this course you will learn the fundamentals of influencer marketing through social media platforms. The course will focus on content creation, attracting followers, building a base, sponsorship, creating short videos and developing material for online distribution.

On completion of this course a student can progress to Journalism HND, Visual Communications HND, Marketing or developing their online presence.

COURSE CONTENT

Video Production QQI L6, Digital Marketing, Digital Editing, Media Analysis, Personal Professional Development, Communications, The Internet, Computer Illustrated Graphics.

CERTIFICATION

QQI level 5.

DURATION

One year.

ENTRY REQUIREMENTS

Leaving Certificate or equivalent is an advantage. Mature applicants, or those without a formal education are also welcome to apply.

PROGRESSION

On completion of this course a student can progress to our Creative Media Production HND, Journalism HND, Visual Communications HND, Marketing or develop an online profile.



Hairdressing Pre-Apprenticeship

QQI Award Hairdressing Level 5 (5M3351)



This course comes at a very exciting time in Hairdressing with the new National Hairdressing Apprenticeship now a reality. The aim of the course is to prepare students for an opportunity as an apprentice in the Hairdressing Industry. Students will be given practical training and confidence in many disciplines, e.g. blow drying, colour application, basic cutting, setting, etc. which they will be required to combine with practical experience of salon work placement to help them secure an Apprenticeship. Emphasis is placed on all key areas of Hairdressing that will enhance students' techniques, creative and interpersonal skills. All practical training takes place in our fully equipped modern Hair Salon.

COURSE CONTENT

Hairdressing Theory and Practice, Hairdressing Science, Creative Styling, Customer Service, Work Experience, Health and Safety, Retail Selling.

CERTIFICATION

QQI Level 5, one year.

ENTRY REQUIREMENTS

Leaving Certificate (including LCA) and interview. Mature students are welcome to apply. NHA Level 4 major award.

CAREER OPPORTUNITIES

QQI Level 5 Certificate in a related area. Mature and postgraduate students are also actively encouraged to apply for this course.

CAREER OPPORTUNITIES

Hairdressing Apprenticeship.

PROGRESSION

Placement as a First Year Apprentice in a Hairdressing Salon. Opportunity to progress to employment and a National Hairdressing Apprenticeship Certificate in Coláiste Dhúlaigh College of Further Education.

COLLEGE LINKS

Please refer to the QQI links on our website.

www.cdcfe.ie or www.QQI.ie

National Hairdressing Apprenticeship (NHA)

Work Based Learning - QQI AWARD (LEVEL 6)



Coláiste Dhúlaigh College of Further Education is a collaborating provider that delivers the new National Hairdressing Apprenticeship (NHA).

All Hairdressing Apprentices must be employed full-time in one of a range of hairdressing salons which are approved by a Senior Training Advisor / SOLAS Authorised Officer.

This NHA is a blend of on-the-job learning that will take place within the salon and off-the-job education and training on a one-day release in Coláiste Dhúlaigh College of Further Education.

COURSE CONTENT

This three-year (minimum) apprenticeship programme is aimed towards individuals who wish to pursue a career in hairdressing. The NHA programme aims to ensure that theoretical learning in an education or training institution is reinforced by the practical experience of undertaking a real job and equips the participant to absorb workplace culture and business practices while honing employability skills.

CERTIFICATION

The programme leads to a Level 6 Advanced Certificate in Hairdressing awarded by Quality and Qualifications Ireland (QQI).

ENTRY REQUIREMENTS

Full time employment with a salon registered under the National Hairdressing Apprenticeship scheme. QQI Level 4 major award or equivalent or two years full-time experience in a hairdressing salon. Where English is not your first language a B2 Oxford level of English is required. Mature students are welcome to apply.

CAREER OPPORTUNITIES

On successful completion you will be able to work as a qualified hairdresser with a nationally and internationally recognised qualification. Fully qualified hairdressers will be able to demonstrate an extensive range of skills and services; from styling, colouring and cutting hair to performing scalp treatments, and will have nationally and internationally recognised qualifications.



PROGRESSION

There are many routes for progression within the industry, but a Level 6 QQI award also opens the opportunity to do a Level 7 (Bachelor Degree) in areas such as business management.

HOW TO APPLY

Applicants Contact:

info@hairdressingapprenticeship.ie

Employers Contact:

Suzanne Kiely
National Hairdressing Apprenticeship
Programme Co-ordinator
info@hairdressingapprenticeship.ie
061 487940

Skills to Compete courses offer unemployed adults the opportunity.

Barbering – Skills to Compete

QQI Award Employment Skills Level 4(4M0857)



Skills to Compete courses offer unemployed adults the opportunity of returning to part-time education while retaining their benefits. They are an initiative offering support to those who have lost their jobs because of COVID-19 and who wish to re-enter the workforce.

Barbering is a one-year part-time Skills to Compete course. The course aims to prepare students for employment in the Barbering Industry. Students will be given training and confidence to secure an Apprenticeship in a Barber shop. Emphasis is put on all key areas of Barbering which will enhance students' techniques, creative and inter-personal skills. All practical training takes place in our fully equipped hair salon.

COURSE CONTENT

QQI Level 4 and QQI Level 5 Part Award.

Barbering Techniques (QQI Level 5), Workplace Safety, Information Technology (IT), Work Experience, Customer Service* (Subject to change).

CERTIFICATION

QQI Level 4 PART AWARD.

DURATION

One-year part-time course (September – May).

2 days per week .

ENTRY REQUIREMENTS

All applicants must be in receipt of or a dependent of a Social Protection payment before starting the course. Participants on CE schemes or TUS may apply also. All individuals who present for this course will be given individual guidance by qualified tutors who are in a position to make recommendations as to what courses may suit their learning needs.



PROGRESSION

Successful learners may progress on to Hairdressing QQI Level 5 or Further Education.

CAREER OPPORTUNITIES

This is an area of study that offers excellent career opportunities in the barbering industry. Junior Barber, Theatrical and/or Film, Hairdressing work, Hairdressing Retail outlets.

HOW TO APPLY

Apply online at www.cdcfe.ie.

Performing Arts

Higher National Diploma in Performing Arts (Acting)



This is a vibrant, vigorous and creative course, designed to give students the opportunity to develop skills that can help them advance to further study and the professional world of Performing Arts.

The course offers an opportunity to improve your performing, auditioning and technical production skills. You will learn to work collaboratively with other creative individuals, to display your talents and discover your strengths.

Students will work in various professional theatres and performance venues. Our tutors and visiting practitioners are industry professionals. Entry to the course is through interview and audition.

COURSE CONTENT

YEAR 1

Professional Development, Acting, Voice and Speech for Actors, Acting for Camera, Stagecraft, Devising for Performance, Singing, the Performing Arts Industry.

YEAR 2

Creative Research Project, Working in the Performing Industry, Acting 2, Stage Management, Dance for Actors, Immersive theatre, Costume.

DURATION AND CERTIFICATION

Year One - Higher National Certificate.

Year Two - Higher National Diploma.

Students who complete this course with a merit profile are eligible to apply for BA Hons in Drama in Coláiste Dhúlaigh College of Further Education. This is awarded by the University of Wolverhampton.

ENTRY REQUIREMENTS

Leaving Certificate (including LCA), appropriate approved prior learning (APL), interview and audition. Mature students are welcome to apply.

CAREER OPPORTUNITIES

Graduates of our course can pursue a career in many areas of Theatre, Film and the broader Entertainment Industry.

PROGRESSION

Entry into final year of third year degree programmes in a number of UK universities is possible. Also, as stated above, completion of this course enables you to apply to complete the BA Hons in Drama in Coláiste Dhúlaigh College of Further Education.



Computer Science

QQI Award – Software Development Level 5 (5M0529), and Level 6 (6M0691)



This course encompasses many aspects of computing including scientific foundation, coding, web design, IT skills and Analysis and familiarisation with a range of industrial and commercial applications.

COURSE CONTENT

YEAR 1

Fundamentals of Object Oriented Programming (Java), Programming and Design Principles, Software Architecture, Database Methods, Communications, Work Experience, Networking, Web Authoring, Computational Methods and Problem Solving.

YEAR 2

Object Oriented Programming, Graphical User Interface Programming, Software Architecture, Project Management, Web Development, Relational Databases, Communications, and Work Experience.

CERTIFICATION

QQI Level 5 and Level 6.

DURATION

Two Years.

ENTRY REQUIREMENTS

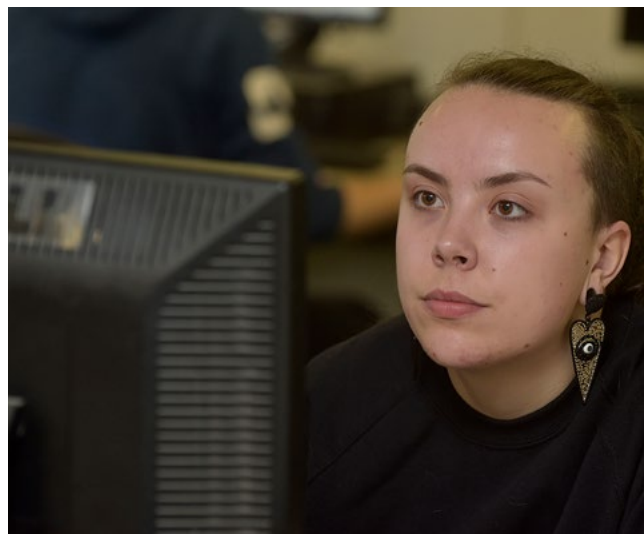
Leaving Certificate (minimum pass / O6 in ordinary level Mathematics). Mature students are welcome to apply.

CAREER OPPORTUNITIES

Students can anticipate employment as Computer Technicians, Web Designers, Software and Hardware Support Specialists and Computer Sales professionals. Alternatively, they may use the course as a sound academic basis for further study.

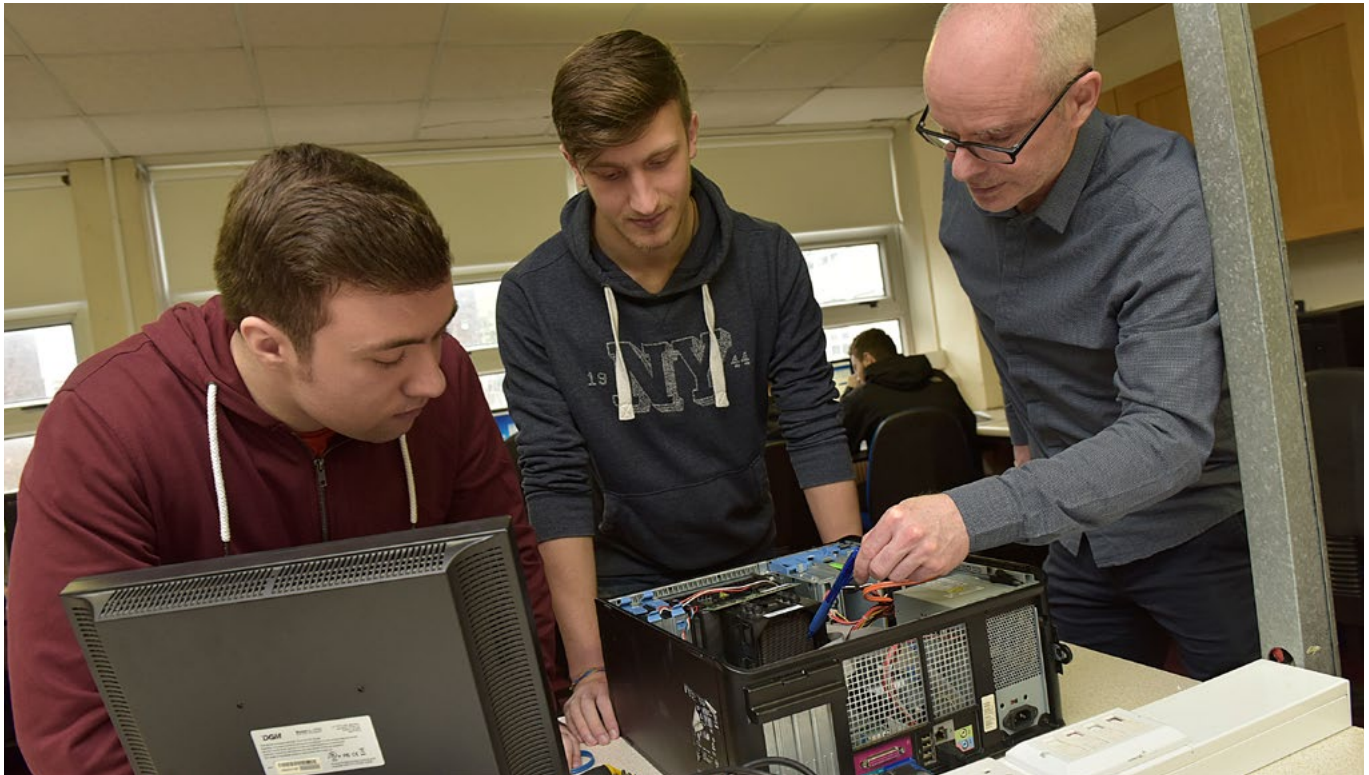
PROGRESSION

Successful students may progress to the second year of the degree in Computer Science (TU856 and TU85) or the Computing degree (TU859) in TU Dublin (requires Leaving Cert. 03 in Ordinary Level Mathematics) and also to the second year of computing courses in TU Dublin and National College of Ireland. Refer also to the QQI links section on our website.



Computer Networking Technologies

QQI Award Computer Systems Networks Level 5 (5M0536), and Level 6 (6M0695)



This two-year course is designed to build the student's confidence and skills in Computer Networking, Computer Systems Configuration and Computer Maintenance. The course has a high practical content to maximise and develop new skills

COURSE CONTENT

YEAR 1

Computer Systems Hardware, Networking Essentials, Operating Systems, Maths for IT, Communications, Work Experience, Virtualisation Support, Programming and Design Principles.

YEAR 2

Physical and Logical Networking, Systems Software, Information Technology Administration, Network Infrastructure, Digital Compliance, Network Security, Communications, Work Experience.

CERTIFICATION

QQI Level 5 and 6.

DURATION

Two years.

ENTRY REQUIREMENTS

Leaving Certificate including LCA and interview*. Mature students are welcome to apply.

*Ideally candidates should have a pass in Leaving Certificate Mathematic or equivalent.

CAREER OPPORTUNITIES

Computer Networking, Computer Maintenance, Electronics as well as Information and Communications Support Area. Students who successfully complete Year One can also apply through the Higher Education Links.

COLLEGE LINKS

Students who successfully complete Year Two will gain advanced entry to Year Two of the Level 7 degree in Networking Technology in TU Dublin. Students may also progress to the final year of an honours degree in Sunderland University.

Engineering Technology (Pre-Apprenticeship)

QQI Award Engineering Technology Level 5 (5M2061)



This course is designed to meet the needs of a variety of students who wish to explore a number of areas in a technical/pre-apprenticeship setting. The course aims to develop skills, knowledge and expertise essential to gaining an apprenticeship in a range of trades in the Building Industry.

COURSE CONTENT

Engineering Workshop Processes, Work Experience, Computer Aided Design (2D), Woodwork Fabrication, Mathematics Level 5, Electronics, Safety and Health in the Workplace, Communications. Workshops in Safe Pass and Manual Handling will be an important element of this course.

CERTIFICATION

QQI Level 5.

DURATION

One Year.

ENTRY REQUIREMENTS

Candidates need to have completed Leaving Certificate, Leaving Cert Applied or equivalent. Mature applicants are welcome to apply.

CAREER OPPORTUNITIES

Students will have developed pre-apprenticeship skills that will make them eligible for employment in a technical setting or progression into a range of trades.

Students can use this major award (5M2061) to apply to colleges through the CAO and progress to a number of Level 7 degrees in a number of ITs and Universities including TU Dublin and Dundalk IT.

Preliminary Engineering

QQI Award Engineering Technology Level 5 (5M2061)



The Preliminary Engineering course has been designed to meet the needs of a variety of students wishing to study Engineering at third level, specifically those who did not satisfy the entry requirements for direct entry to a degree course, and adult returnees to education.

By completing our 'Maths for STEM' module, graduates of the Preliminary Engineering course will have the opportunity to progress to the following Level 8 Engineering courses:

TR032 – Engineering in Trinity College Dublin (TCD).

TU805 – Engineering (General Entry), TU811 – Product Design, TU814 – Transport Operations and Technology, TU873 – Industrial Mathematics, and TU874 Mathematical Sciences, all in Technological University Dublin (TU Dublin).

A variety of other Level 8 courses nationwide via the CAO QQI application system.

Preliminary Engineering graduates can also progress to TU709, TU Dublin's General Entry Level 7 degree course as well as a range of other Level 7 degree courses nationwide.

COURSE CONTENT

Maths for STEM, Physics, Mechanics, Chemistry, Engineering Workshop Processes, Computer Aided Draughting (2D), Work Experience, Communications.

CERTIFICATION

QQI Level 5.

DURATION

1 Year.

ENTRY REQUIREMENTS

Five passes in Leaving Certificate (one of which should be a minimum of C3/O4 in Ordinary Level Mathematics). Leaving Certificate Applied is not suitable for this course.

Mature students (over 21) who do not meet the minimum academic requirements but who can demonstrate the ability to successfully participate on the course will be considered.

PROGRESSION

Progression to Engineering in Trinity College Dublin (TR032)

Reserved places: 5

Mandatory subject requirements: Maths for STEM (Merit). A Distinction in either Physics or Chemistry and a Pass in Communications.

Students may also apply to Engineering courses in various other third level institutions through the Higher Education Links Scheme.

Students may also apply to Engineering courses in various other third level institutions through the Higher Education Links Scheme.



Pre-University Science

(DCU Access Course)



This course has been specifically designed to meet the needs of students who wish to study Science to degree level in Dublin City University. The course will cater for two different groups of learners: students who did not obtain the required Leaving Certificate points for their chosen Science course and students who wish to acquire a foundation in Science subject areas and Mathematics before entry to University.

Students who obtain an overall Merit (65%) grade will gain a place on the majority of courses outlined below. The course prepares students for entry to the first year of the following degree courses offered by the Faculty of Health and Science in DCU.

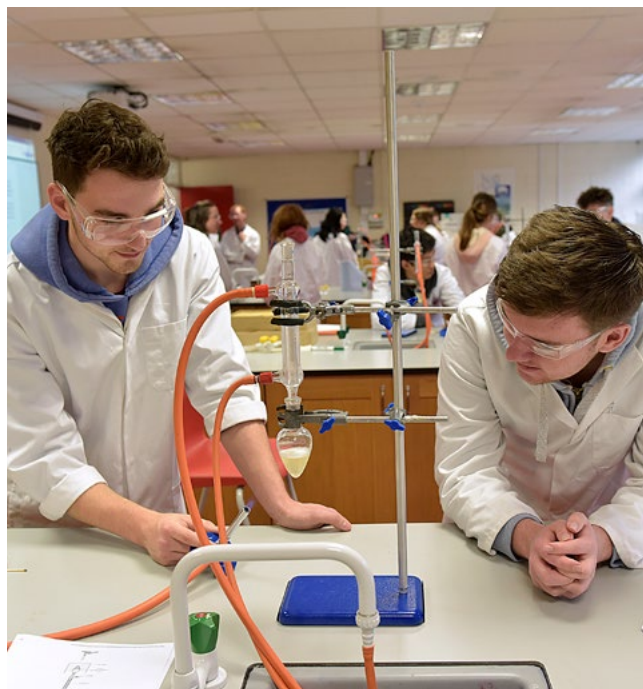
- ▶ DCU - Dublin City University
- ▶ BSc in Environmental Science and Technology (DC166).
- ▶ BSc in Analytical Science (DC161).
- ▶ BSc in Chemical and Pharmaceutical Sciences (DC162).
- ▶ BSc in Chemical Sciences General Entry (DC163) – at end of Year 1 students choose one of BSc in Analytical Science (DC161), BSc in Chemical and Pharmaceutical Sciences (DC162) or BSc in Chemistry with Artificial Intelligence.
- ▶ BSc in Biotechnology (DC181).
- ▶ BSc in Genetics and Cell Biology (DC168) – Only 2 places available.
- ▶ BSc in Biological Sciences General Entry (DC180) – at end of Year 1 students choose one of BSc in Genetics and Cell Biology (DC168), BSc in Biotechnology (DC181) or BSc in Bioprocessing.
- ▶ BSc in Sports Science and Health (DC202) – Only 2 places available.
- ▶ BSc in Science Education (DC203).
- ▶ BSc in Physics General Entry (DC175) – at end of Year 1 students choose one of BSc in Applied Physics, BSc in Physics with Biomedical Sciences.
- ▶ BSc in Physics and Astronomy or BSc in Physics and Data Analytics.

COURSE CONTENT

Laboratory Techniques, Physics, Chemistry, Biology, Mathematics, Microsoft Office Specialist, Communications

CERTIFICATION

Examinations and assessments are conducted with external monitoring by DCU.



DURATION

One Year.

ENTRY REQUIREMENTS

Leaving Certificate with a minimum of a Grade O4 or H7 (C3) in Mathematics. It is essential that all students who apply to this course meet the Maths requirement. Mature applicants (21+) who may not have all the formal academic requirements but who have the ability to successfully participate on the course may be considered but all mature applicants must have passed Leaving Certificate Mathematics.

PROGRESSION AND CAREER OPPORTUNITIES

Students who meet the entry criteria in their chosen college will receive a Round Zero offer from the CAO for the relevant degree choice..

Pre-University Science (Lab. Techniques)

QQI Award (Level 5 – 5M3807)



This course encompasses all the major disciplines of Science. Students will engage in classroom-based lessons with an extra emphasis on practical work that spans Physics, Chemistry and Biology. This will give students a broad range of knowledge across all facets of Science and hone their abilities in a laboratory setting.

Students who pass all modules including course practical work (the pass mark in each subject is 50%) may be eligible for entry to a variety of Level 7 and 8 degree courses in Universities and Institutes of Technology nationwide.

COURSE CONTENT

Biology, Chemistry, Physics, Mathematics, Laboratory Skills, Anatomy and Physiology, Work Experience, Communications.

CERTIFICATION

QQI Level 5.

DURATION

One year.

ENTRY REQUIREMENTS

Leaving Certificate with a minimum of a Grade O5/H7 (OD3/HD3) in Mathematics. Mature students (over 21) who do not meet the minimum academic requirements but who can demonstrate the ability to successfully participate on the course will be considered.

PROGRESSION AND CAREER OPPORTUNITIES

Successful students may follow three main career paths. They may go directly into an apprenticeship, enter employment or continue their studies by progressing to Higher Education Institutions (HEIs) through the QQI Higher Education Links Scheme.

Social Care

QQI Award (Level 5 - 5M2181, Level 6 - 6M2218)



This is a two-year QQI Level 6 course which examines the theory and practice of Social Studies and Social Care. The wide range of modules offered enables students to gain a critical awareness of the way in which society works and provides the opportunity to investigate contemporary social issues and problems. Modules encompass a mix of Psychology, Sociology and practice-based subjects.

Learners are also enabled to improve their communication skills, self-awareness, critical reflection and interpersonal skills, all of which are central to working in Social Care.

Students will engage in supervised work experience over the two years that provides practical knowledge, skills and competence for the field of Social Cares.

COURSE CONTENT

YEAR 1

Social Studies, Intercultural Studies, Psychology, Young People and Society, Care Support, Communications, Work Experience, Personal Effectiveness.

YEAR 2

Rehabilitation Practice, Disability Awareness, Person-centered Planning, Work Experience, Political Studies, Mental Health Awareness, Communications, Boundary Management.

ENTRY REQUIREMENTS

Students are expected to have an academic ability which will allow them to engage in a meaningful way with a QQI Level 5 course of this type. This may include:

- ▶ A QQI Level 4 qualification.
- ▶ A minimum of 5 Pass grades in the Leaving Cert, one of which should be a 06 grade in Leaving Cert English.
- ▶ An overall Merit Grade in LCA.

Exceptions may be made for mature students returning to education. However, a basic level of IT skills is required, for example, familiarity with Microsoft Word.

Students undertaking Social Care and Childcare work placements are also required to meet the conditions of our Fitness to Practice policy along with statutory Garda Vetting requirements.



CAREER OPPORTUNITIES

Social Care involves working with marginalised or disadvantaged people in a caring, compassionate way. There is a wide range of career options in Social Care including:

Youth and community work, working with young offenders, the probation service, working with disadvantaged children, working with the physically or intellectually disabled, the homeless, the elderly, people with drug/alcohol dependency, asylum seekers/refugees etc. Students may also find this course useful as a starting point for careers in policy or research based positions.

COLLEGE LINKS / PROGRESSION

If students meet the criteria required, advanced entry into the 2nd year of the Open Training College BA in Social Care is available. Graduates from this course may also gain entry to the 1st year of related degree programmes in a number of universities through the Higher Education Links Scheme.

Early Childhood Care and Education

QQI Award Early Childhood Care and Education Level 5 and Level 6 (6M2007)



This course is designed to equip the learner with the personal skills, knowledge and competence required for working with children in a professional manner within Early Childhood Care and Education, Primary Education and Social Care settings. The course aims to provide the learner with the necessary skills required for assisting children with General Learning Difficulties (GLD) and Specific Learning Difficulties (SPLD). This course promotes the highest standards of good practice, equality of opportunity, an inclusive approach to curriculum development and respect for diversity in lifestyle, religion and culture.

COURSE CONTENT

YEAR 1

Early Childhood Growth and Development, Children's Rights, Legislation and Regulations, Professional Practice Placement in Early Learning and Care, Curriculum, Play and Creative Studies, Understanding Children with Additional Needs, Holistic Care of Children (Birth to 6 Years).

YEAR 2

Childhood Social, Legal and Health Studies, Child Development, Early Childhood Curriculum, Work Experience, Team Leadership, Supervision in Early Childhood Care, Early Childhood Literacy and Numeracy, Special Needs Assisting, Supervision in Early Childhood Care. Students will also have the opportunity to do extracurricular courses e.g. First Aid and Child Protection Training

PRACTICE PLACEMENT:

Garda vetting is a mandatory requirement for this course.

Learners must complete 150 hours of professional practice placement in a minimum of two settings in Year 1: (1) working directly with children aged between 0- 2 years 8 months, and (2) working directly with children aged 2 years 8 months – 6 years. Learners must be Garda vetted before going on professional practice placement.

In 2022 learners are required to carry out 120 practice placement hours in Year 2 any of the following settings:

- ▶ A Registered ECCE setting as recognised by the HSE
- ▶ A recognised Primary School as per the Department of Education and Skills
- ▶ A recognised Montessori school

CERTIFICATION

QQI Level 5 and 6.

DURATION

Two years.

ENTRY REQUIREMENTS YEAR 1

Students are expected to have an academic ability which will allow them to engage in a meaningful way with a QQI Level 5 course of this type. This may include:

- ▶ Leaving Cert, including Leaving Cert Applied or an NFQ level 4 major award or equivalent
- ▶ Applicants whose first language is not English require proficiency at B2 (CEFR). Applicants may wish to participate in a Level 4 Starter Course with English, to prepare them for this Level 5 programme
- ▶ A desire to work in the sector
- ▶ Mature learners welcome. Where an applicant does not have a Leaving Cert or Level 4, they will have the opportunity to demonstrate their readiness for the course in an interview and by writing a short piece outlining their interest in a career in early learning and care.

ENTRY REQUIREMENTS YEAR 2

This is an advanced course open to students who hold a QQI Level 5 award in Early Childhood Care and Education or its equivalent with a Merit profile (5 Merits in mandatory modules). Applicants must have two written references.

CAREER OPPORTUNITIES

Upon successful completion of this course, students are qualified for employment as Child Care workers in Early Childhood Care and Education settings. On successful completion of the two years students will have the qualifications necessary for employment as pre-school leader and room leader rolls in Early Childhood settings.

Graduates from this course may gain entry to Year 2 in National College of Ireland's BA in Early Childhood Education and also to Degree Programmes in a number of Institutes of Technology with related courses through the Higher Education Links Scheme.

PROGRESSION

- ▶ TU Dublin, BA Early Childhood Care and Education (Level 7 and Level 8).
- ▶ TU Dublin, BA Early Childhood Education.
- ▶ NCI BA Early Childhood Education (part-time).
- ▶ St Nicholas Montessori College.

If graduates from this course meet the criteria they may gain advanced entry into Year 2 in National College of Ireland's BA in Early Childhood Education.

Youth Activities Worker

QQI Award Youth Work Level 5 (5M4732)



This innovative one-year course examines the provision of youth work. We will examine the theory and practice of Youth Work and Outdoor Education to help us better understand the potential of outdoor activities to deliver youth work outcomes. The wide range of modules offered enables students to gain a critical awareness of the way in which youth work operates and how it can be supported through adventurous experiences. Learners are also enabled to improve their communication skills, self-awareness, critical reflection and interpersonal skills, all of which are central to working in a youth work and outdoor learning setting. To equip students with the skills to work with young people in an outdoor environment, students will have the opportunity to gain experience in a variety of outdoor settings. This is achieved through participation in a variety of outdoor activities such as rock climbing (outdoor and indoor), kayaking, hill walking, environmental education, bushcraft/survival skills and forest-based activities.

Students will engage in supervised work experience over the year which provides practical knowledge, skills and competence for the field of Youth Work.

COURSE CONTENT

Understanding Youthwork, Working with Young People, Young People and Society, Communications, Work Experience, Peer Education, Adventure Activities, Working with Groups, First Aid Response, Outdoor Learning (Rock Climbing, Kayaking, Hill Walking, Environmental Education, Bushcraft/Survival Skills and Forest Based Activities).

ENTRY REQUIREMENTS

Five passes in Leaving Certificate (one of which should be a 05/C3 in Ordinary Level English) or a Merit in Leaving Certificate Applied.

Mature applicants (21+) who may not have formal academic requirements but who have the ability to successfully participate on the course will be considered.

CAREER OPPORTUNITIES

Youth Work involves working with marginalised or disadvantaged young people in a caring, compassionate way. There are a wide range of career options in Youth Work including: Youth and Community Work, working with young offenders, the probation service, working with disadvantaged children, working with young people with physical or intellectual disabilities, drug/alcohol dependency, asylum seekers/refugees etc

COLLEGE LINKS / PROGRESSION

Graduates from this course may gain entry to Social Care Level 6.

Graduates can also apply to degree programmes in a number of Institutes of Technology with related courses through the Higher Education Links Scheme.



Pre-Primary School Teaching

QQI Award: Education and Training Level 5 (5M3635) with Honours Irish



This course is suitable for post leaving cert students and mature students who are interested in teaching (Primary school teaching, Post-Primary school teaching, or teaching in Further Education). The award offers a wide range of modules which enables students to gain a critical awareness of the way in which the Irish Education system operates. Learners are also enabled to improve their communication, critical reflection and interpersonal skills, all of which are central to working in an educational setting.

Students have the option to undertake Leaving Certificate Irish at Higher Level and also have the opportunity to study QQI L5 Maths (a minimum grade of Merit is accepted for Maths as entry to the B.Ed for mature students once other requirements are met). Students will engage in work experience as Classroom Assistants. Students also have the opportunity to engage in their work placement overseas as part of Erasmus +.

The Teaching council have set the minimum grade requirement to study to become a primary school teacher in Ireland.

Irish H4

English H7/O4

Maths H7/O4

If you did not achieve the Irish and Maths grade in your leaving cert, we offer classes to help you achieve that grade.

The course is open to PLC and VTOS/ mature learners

COURSE DESCRIPTION

Students will undertake Leaving Certificate Irish at Higher Level and follow a QQI Level 5 Education and Training Award (5M3635). This award offers a wide range of modules which enables students to gain a critical awareness of the Irish Education system from a historical and contemporary viewpoint and introduce them to a variety of pedagogical skills. Learners are also enabled to improve their communication, critical reflection and interpersonal skills, all of which are central to working in an educational setting. Students will engage in work experience as Classroom Assistants.

OTHER CAREER OPPORTUNITIES

A career as a Special Needs Assistant (SNA) involves working with children and young adults with General Learning Difficulties (GLD) and Specific Learning Difficulties (SPLD) in Mainstream Education at Primary and Post Primary, Special Schools, Day Care Centres and Clinics or as Personal Assistants.



ENTRY REQUIREMENTS

Garda Vetting and Leaving Certificate grades above.

COURSE CONTENT

Communications, Concepts in Education and Training, Interpersonal and Group Behaviour, Work Experience, Research and Study Skills, Approaches to Early Childhood Education, Psychology, Children with Additional Needs.

Students will also have the opportunity to complete Leaving Certificate Higher Level Irish.

COLLEGE LINKS / PROGRESSION

Alternative progression routes to becoming a primary school teacher

Dublin City University

- ▶ Study DC009: BA (Joint Honours) Humanities with Irish and one other subject and then complete PME – Professional Master of Education: Primary Teaching DC970.

Marino Institute of Education

- ▶ Study CM020: B.Sc Early Childhood Education followed by PME – Professional Master of Education (Primary).
- ▶ Study CM010: B.Sc Education Studies followed by PME – Professional Master of Education (Primary).

Maynooth University

- ▶ MH101 Arts followed by PME – Professional Master of Education (Primary).
- ▶ MH801 Early Childhood Teaching and Learning followed by PME – Professional Master of Education (Primary).

Post primary Teaching

- ▶ DCU: DC010 Post Primary Teacher Education in Religious Education and English
- ▶ DCU: DC011 Post Primary Teacher Education in Religious Education and History

Pre-University Psychology

Community Health Services (5M4468) QQI Level 5 award



This one-year full time course in Pre-University Psychology will introduce you to the field of “scientific psychology” and provide you with a broad understanding of the various subdisciplines within this social science. Over the year, you will learn how psychologists study, explain and predict behaviour, in addition to classifying and treating abnormal behaviour. You will learn about the use of psychology in clinical, forensic, consumer, occupational and other community settings.

The modules have been specifically selected to provide you with a strong foundation of knowledge for entering onto a degree in psychological science. This course also benefits applicants interested in related fields including mental health (counselling and psychotherapy), justice and law, social care, marketing and many more.

As a growing sector, in huge demand, this course will be of interest to anyone fascinated by human behaviour seeking a strong foundation in this field.

COURSE CONTENT

This course leads to a Level 5 QQI award in Community Health Services (5M4468)

Psychology, Human Growth & Development, Criminology, Research Methods, Statistics, Social Studies, Understanding Mental Health, Safety & Health at Work, Customer Service, Work Experience.

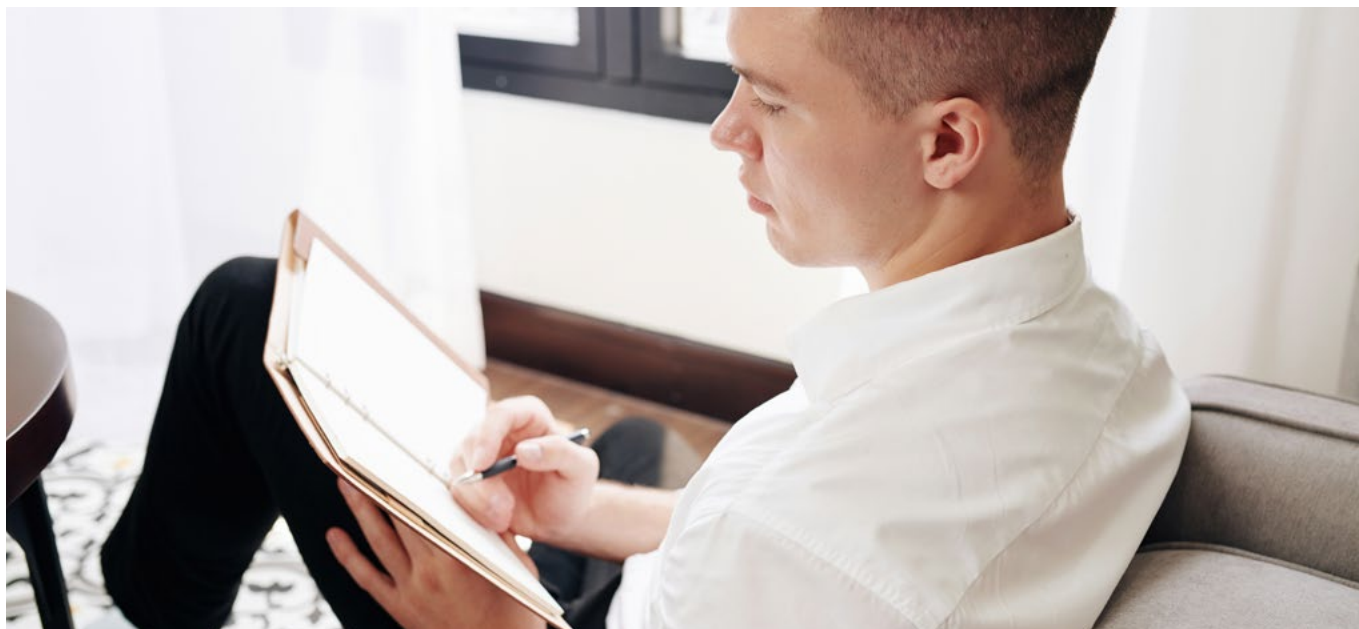
ENTRY REQUIREMENTS

Students are expected to have an academic ability which will allow them to engage in a meaningful way with a QQI Level 5 course of this type. This may include:

- ▶ A QQI Level 4 qualification,
- ▶ A minimum of 5 Pass grades in the Leaving Certificate, one of which should be an O6 grade in Leaving Certificate English
- ▶ An overall Merit Grade in LCA.
- ▶ Exceptions may be made for mature students returning to education.
- ▶ Students undertaking work placements are also required to meet the conditions of our Fitness to Practice policy along with statutory Garda Vetting requirements

DURATION

1 Year



Outdoor Adventure Management

QQI Level 5 in Outdoor Sport and Recreation (5M5148)

QQI Level 6 in Sports Recreation and Exercise (6M5147)

The first year of our course aims to equip our students with a variety of personal and practical skills in outdoor adventure environments. Additionally, you will be introduced to the theory that underpins outdoor adventure education and the academic skills needed to pursue a career in the outdoor adventure sector. The second year of our course takes you further down the path of understanding the value of outdoor education in all aspects of life. You will explore the benefits of positive outdoor experiences and all its potential. This course provides the theoretical underpinning of outdoor learning as well as looking at leadership within the outdoor activity sector.

COURSE CONTENT

YEAR 1

Certificate in Outdoor Sports and Recreation (QQI Level 5):

Outdoor Recreation, Adventure Activities, Communications, Work Experience, Outdoor Leadership and Safety, Sailing Skills, Kayak instruction Skills, Windsurfing Skills, Powerboat Skills, Rock climbing skills, Rescue and Emergency Care (REC2) first aid, Safeguarding, Principles of Leave No Trace.

YEAR 2

Sports Recreation and Exercise (QQI level 6):

Sport industry practice, Leadership, Event Management, Safety Management, Work practice, Sailing instructorship, Windsurfing instructorship, Kayak instruction skills, Powerboat skills, Mountaineering and climbing skills

*All modules presented are subject to change and will be confirmed each year.

** A limited number of second-year students can partake in fully funded 3-week work placements in Corsica (Glénans Sailing School, CESM) and Fuerteventura (Club Ion) through the Erasmus program.

Students must budget around €1500 per year to cover the cost of personal equipment, trips and external assessments.

YEAR 3

"Stand Alone" (Option 1: Entrepreneurship in the Outdoors, Option 2: Traineeship in the Outdoors)

CAREER OPPORTUNITIES

The purpose of the Outdoor Adventure Management course is to develop students as professional, self-reflective individuals capable of meeting the demands of employers in the Outdoor & Adventure Education sector and adapt to a constantly changing world. The qualifications aim to widen access to higher education and enhance the career prospects of those who undertake them. Employers are keen to hire graduates that have the right skills and aptitudes including creativity, emotional intelligence, critical thinking, resilience and motivation.

Our former students are working all over the world in some of the best positions in the outdoor sector. Some typical job roles related to this qualification include; Educator in an Outdoor Education Centre, Instructor in an Adventure Centre, Business Owners, Environmental Development Staff, Park Rangers, Conservation Officers, Forest School leaders, Yacht Masters, Nature Kindergarten staff, Leisure and Community Centre staff, Sport Development Officers, Adventure Travel Guide, Youth Development work, High Altitude Mountain Guide, Raft Guiding, PE Teacher, Army and Navy Officers, Members of the Gardai



PROGRESSION

In the past, students have continued their education with advanced entry into the following colleges: Galway-Mayo Institute of Technology (Outdoor Education), Waterford Institute of Technology (Leisure Management), IT Tralee (Outdoor Learning), University of Chichester (Outdoor Education), Strathclyde University (Outdoor Education), University of St Martins (Outdoor Education) and University of Edinburgh (Outdoor and Environmental Education).

ENTRY REQUIREMENTS

- ▶ Students must have a leaving certificate or equivalent and must be 18 years of age at the time of registration.
- ▶ Prior to formal acceptance of any conditional offer, you must:
- ▶ attend an Outdoor Adventure Management briefing.
- ▶ submit a letter of motivation that demonstrates your ability to communicate effectively and discusses internal and external motivation for undertaking this course (see template for suggested headings).
- ▶ Water confidence and a good swimming ability is required for this course. Students need to be able to swim 50m in order to take part.

- ▶ Students undertaking Outdoor Adventure Management work placements are also required to meet the conditions of our Fitness to Practice policy along with statutory Garda Vetting requirements
- ▶ There are opportunities for direct entry to our second and third year with relevant academic and practical experience. This will be assessed through a Recognition of Prior Learning application process. Please contact the program coordinator if you would like to explore this option.

OTHER INFORMATION

This course requires a high level of physical fitness and self-motivation, and a strong interest in outdoor sports. We are committed to staying true to the ethos of experiential education and therefore this is a uniquely blended program: it is estimated that 40% of our activities are academic, and 60% are practical in the outdoors. We believe that theory informs practice and practice informs theory. Our course is inclusive and caters to a diverse range of learning preferences.



Occupational Therapy Assistant

QQI Award in Health Service Skills (Level 5 – 5M3782)



This course aims to equip the learner with the necessary skills required to progress on to potential employment as an Occupational Therapy Assistant (OTA) or as a Health Care Assistant.

An Occupational Therapy Assistant (OTA) works alongside the Occupational Therapist (OT) in developing and providing holistic, client-centered treatment plans to service users in a wide range of settings such as rehab, mental health, paediatrics or geriatrics. An important team member, they provide assistance to those who, as a result of a disability, illness or injury, require support in performing meaningful occupations or activities of daily living (ADLs). Under the direction and supervision of the OT, some duties of the OTA include facilitating therapeutic interventions e.g. guiding service users in how to use assistive equipment that can make daily activities easier for them and enhance their quality of life. Important administrative duties of the OTA include contributing to team meetings, documenting a patient's treatment progress as well as maintaining office treatment areas, equipment, and supplies.

DURATION

1 year.

COURSE CONTENT

Anatomy and Physiology, Occupational Therapy Assistant Practice, Occupational Therapy Assistant Theory, Care Support, Communications, Infection Prevention and Control, Intellectual Disability Studies, Rehabilitation Support, Understanding Mental Health, Work Experience.

CERTIFICATION

QQI Level 5.

ENTRY REQUIREMENTS

Leaving certificate and interview. Mature students are welcome to apply.

CAREER OPPORTUNITIES

Successful graduates may gain employment as an Occupational Therapy Assistant in the HSE or with private health service providers. Students may also work as Healthcare assistants on completion of the course.

Pre-University Sport Science

QQI Award Sports, Recreation and Exercise Level 5 (5M5146)



This one-year course introduces students to the broad and expanding area of Sport Science and Physiology. The course allows students to lay the foundations for further study in this area. Students will gain knowledge and understanding of the science that underpins exercise and sport. Students will explore the importance of physical activity and its role in maintaining a healthy lifestyle. It is important for prospective students to know that it is a theory-based course with some practical elements.

COURSE CONTENT

Sport Anatomy and Physiology, Exercise and Fitness, Body Massage and Figure Analysis, Kinesiology, Sport and Injury Prevention, Nutrition, Sport and Recreation Studies, Team Working, Communications, Personal Professional Development, Work Experience and First Aid Responder training.

DURATION

One year.

ENTRY REQUIREMENTS

Leaving Certificate, interview and a Science subject at Leaving Certificate. Students must apply for Garda Vetting at registration in September.

CAREER OPPORTUNITIES

On completion of this course, students may wish to continue their studies in the Sport or Exercise Sciences, Physical Education, Coaching, Strength and Conditioning, Personal Training or they may wish to enter directly into employment in the Health and Fitness Industry.

PROGRESSION

Students can progress from this course to Institutes of Technology and Universities including TU Dublin, UCD, Dundalk IT, Carlow IT, UCC, Tralee IT and through the Higher Education Links Scheme on obtaining a full Award with specific requirements set by the different universities and ITs.

Students can gain access to the second year of three different degree programmes in University of Sunderland in the UK. These degrees include BSc in Sport and Exercise Sciences, BSc in Coaching Science and BSc in Nutrition, Exercise and Health. There is also a possibility to apply for several therapy courses in University of Sunderland. This is based on interview and meeting certain requirements set by the university.

Students can also progress to the degree offered by the Institute of Physical Therapy. Students may also progress to Saxion University of Applied Sciences in the Netherlands to complete Bachelor in Physiotherapy as an EU student.

Rehabilitation Sport and Exercise

QQI Award Sport, Recreation and Exercise Level 5 (5M5146)



Are you interested in working with the rehabilitation of injured individuals? If you are conscientious, with good communication skills and would like to encourage and motivate people in a sports and exercise setting, then this course is the perfect choice for you.

This award offers a wide range of modules which enables students to promote and maintain health and fitness through rehabilitation and conditioning, enabling people to restore function, return to sport or work and maintain a healthy lifestyle. You will learn how to treat and prevent injuries through hands-on treatment and exercise rehabilitation plans.

COURSE CONTENT

Sport and Recreation Studies, Exercise and Fitness, Communications, Work Experience, Injury Prevention, Kinesiology, Sports Anatomy and Physiology, Rehabilitation Support, Massage

**Additional certificates are available throughout the year.

Students will engage in practical work experience over the year as and may also engage in their work placement overseas as part of Erasmus +.

CERTIFICATION

QQI Level 5 in Sport, Recreation and Exercise

DURATION

One year.

ENTRY REQUIREMENTS

Leaving certificate: Maths minimum O4 and Science subject desirable.

LCA students with a distinction will be considered.

For mature students, life and work experience will be considered.

Applicants whose first language is not English may be tested prior to acceptance.



CAREER OPPORTUNITIES

Students can gain direct employment across different sectors to provide rehabilitation sports and exercise services, such as with sports teams, injury and massage therapy clinics, gyms, leisure centres and health spas.

PROGRESSION

This major award (5M5146) can be used to progress to ITs and Universities in Ireland and UK such as:

- ▶ BSc Hons Sports and Rehabilitation Therapy at University of Sunderland
- ▶ BSc Hons in Sports and Leisure Management at TU Dublin
- ▶ A variety of related progression courses at Carlow IT, including Higher Certificate in Physiology and Health Science, BSc Hons degrees in Sports Rehabilitation and Athletic Therapy, Sport and Exercise Science or Strength and Conditioning
- ▶ Students can use this major award (5M5146) to apply to colleges through the CAO.

Physiotherapy Assistant (Health Service Skills)

QQI Award Health Service Skills Level 5 (5M3782)



This course aims to provide the learner with the necessary skills required to progress to potential employment as a Physiotherapy Assistant or a Health Care Assistant. The course covers Physiotherapy Assistant Theory, Physiotherapy Assistant Practice and Massage as well as the Healthcare modules to equip the learner with the skills and knowledge required to care for clients as required by the Health Service Executive (HSE) to gain employment in the Healthcare sector.

COURSE CONTENT

Care Support, Infection Prevention and Control, Sport Anatomy and Physiology, Work Experience, Communications or Customer Service, Physiotherapy Assistant Practice, Physiotherapy Assistant Theory, Care Skills, Body Massage and Figure Analysis.

First Aid Responder and Patient Handling training will be an important element of this course. Students must undertake 120 hours of work placement to complete the course and must secure this placement themselves in a Healthcare setting.

CERTIFICATION

QQI Level 5.

DURATION

One year.

ENTRY REQUIREMENTS

Leaving Certificate with a minimum of five passes and an interview.

A Science subject at Leaving Certificate would be desired. Students must apply for Garda Vetting at registration in September.

CAREER OPPORTUNITIES

On completion of this award, students can progress to potential employment as a Physiotherapy Assistant in a physiotherapy department or as a Health Care Assistant in the Healthcare Industry.

PROGRESSION

Students can use this QQI course to progress to further studies in closely related and highly interesting courses in third level institutions across Ireland and UK. Students can also progress to Saxion University of Applied Sciences in the Netherlands to complete a BSc Degree in Physiotherapy as an EU student.



Health Science (Pre-Nursing)

QQI Award Nursing Studies Level 5 (5M4349)



This course introduces students to the broad and expanding area of Nursing and Health Science. It has been designed to meet the needs of different groups of students such as students who did not obtain the required Leaving Certificate points for their chosen nursing course, students who were ineligible to progress to a degree programme because they did not study a Science subject for the Leaving Certificate and students who may or may not have gained the necessary Leaving Certificate points who wish to gain invaluable preparative skills for progression to university programmes.

COURSE CONTENT

Anatomy and Physiology, Nursing Theory and Practice, Human Growth and Development, Care Skills, Care of the Older Person, Communications, Palliative Care, Infection Prevention and Control, Work Experience, Mathematics (optional: for those who wish to study in UK).

CERTIFICATION

QQI Level 5 in Nursing Studies.

DURATION

One year.

ENTRY REQUIREMENTS

Leaving Certificate and interview. A Science subject at Leaving Certificate is desirable. Mature students are welcome to apply. A written reference should be presented at the interview. To access universities in the UK students will require a minimum of O4 in Mathematics.

CAREER OPPORTUNITIES

This course will also serve as an excellent foundation in the core subjects for students who wish to pursue careers or further study in the Health Care profession. Students are eligible to work as health care assistants on completion of the course.

COLLEGE LINKS

Learners can access courses in a range of colleges across Ireland with this full Pre-Nursing Studies award. The minimum requirement to apply for these Level 8 Nursing Degree courses is 5 Distinctions – as part of a full award.

Colleges accessible to learners to apply to once they have achieved 5 Distinctions as part of a full award include: DCU, UCD, UCC, Trinity College, Dundalk IT, Galway/Mayo IT, IT Tralee, Letterkenny IT, NUI Galway, St Angela's College, University of Limerick, Waterford IT, Athlone IT.

Students can apply through UCAS to Ulster University, University of Sunderland, Wolverhampton University, University of Dundee and Napier University, Edinburgh, to complete level 8 degree in Adult Nursing. These colleges have specific requirements for entry that can be gained through the completion of QQI level 5 Pre-Nursing.



Sport, Health and Lifestyle Coaching

Higher National Certificate in Sport and Exercise (Exercise, Health, and Lifestyle)



This course is designed to equip the learner with the necessary skills to work as an independent Nutrition and Lifestyle coach. It is tailored towards those wishing to coach individuals and groups towards long term diet and lifestyle changes for improved health and wellbeing. The course will combine scientific theory based learning along with its practical application.

In addition to the mandatory modules, students will be given the opportunity to become certified first aid responders. A qualification from ITEC in Holistic Massage will also be offered

COURSE CONTENT

Nutrition, Lifestyle Coaching, Exercise Psychology, Professional Skills, Physical Activity Lifestyle and Health, Anatomy and Physiology, Coaching Practice and Skill Development, Sports Massage.

DURATION

One year.

CERTIFICATION

BTEC Higher National Certificate in Sport and Exercise (Exercise, Health and Lifestyle).

ENTRY REQUIREMENTS

Leaving Certificate and interview. A Science subject at Leaving Certificate would be desirable. Applicants with prior learning will also be considered. All knowledge, skills and competencies accumulated through life and work will be considered. Students must apply for Garda Vetting at registration.

CAREER OPPORTUNITIES

On completion of this course, students can commence a career as a Nutrition and Lifestyle Coach. The HNC can be combined with further study to attain a Higher National Diploma.

Speech and Language Therapy Assistant

QQI Award in Health Service Skills Level 5 (5M3782)



This course is designed to provide learners who are considering a career as a Speech and Language Therapy Assistant with a solid foundation of knowledge of their chosen field. The learner will gain knowledge of the application of a wide range of communication styles and codes in relation to Speech and Language Therapy Practice. They can also use their qualification to work as a Speech and Language Therapy Assistant as per the HSE appointed grade. Alternatively, they can use the programme as a foundation for further study in the areas of Childcare, Social Care and Health Care.

Learners will develop an awareness of how to assist a Speech and Language Therapist in their work of helping clients manage challenges in relation to speech, language, voice and feeding difficulties. Work Experience and assessment are undertaken under the supervision of a qualified Speech and Language Therapist.

COURSE CONTENT

Speech and Language Therapy Theory, Care Support, Child Health and Well Being, Anatomy and Physiology, Infection Prevention and Control, Communications, Work Experience.

CERTIFICATION

QQI Level 5 in Health Service Skills

DURATION

One year

ENTRY REQUIREMENTS

Leaving Certificate or Leaving Certificate Applied and interview. Mature students are welcome to apply.





Top-Up Degree in Film and Television Production

BA (Hons) in Film and Television Production (Top-up)



Practically and creatively led, our Level 8 Top-up degree in Film and Television Production offers both academic and practical subjects. An intensive industry-led programme, the course is taught by industry professionals and is supported by guest lectures of the various sectors within the Irish Film and Television Industry. Students benefit from the expertise of film directors, producers and professional crew in the areas of Development, Camera and Sound, Documentary Production, Editing, Sound Design, Production Management and Production Design amongst others, as well as a connection to Irish Film and TV industry bodies and organisations.

Students undertake a series of practically led modules. A pre-production and a production module in the first and second semester respectively tasks students with developing a screenplay or documentary treatment and leading the production of a short film in a creative, collaborative and professional way. Films completed to a professionally standard are normally screened at the end of year CDCFE Degree Screening in the Light House Cinema, Dublin. In Semester 2, students have the option of either Documentary Production, where they produce a shorter factual film, or Work Placement, a self-led placement where they are guided by the tutor.

Other modules cover areas such as Opportunity, Entrepreneurship and Employment in the Creative Industries in Ireland and abroad, Collaborative Skills in Film and Television Production, where students perform two distinct crew roles on their peers' major projects, and an academic research project which explores specialist Film Studies topics.

COURSE CONTENT

Pre-Production Opportunity, Entrepreneurship and Employability in the Creative Industries, Film Cuts, Cults and Classics: Screening Spectacular Cinema

Major Project, Collaborative Video and Film Production, Documentary and Factual Production (Option 1) Work Placement (Option 2)

CERTIFICATION

Bachelor of Arts (BA Hons) Level 8 from the University of Wolverhampton.



COURSE CHARGES

These programmes are offered as part of our evening and day-time self-financing education provision. Learners will not qualify for a grant but they may qualify for other Social Welfare allowances. The cost of the programme will be €3,500, to be paid in three instalments.

ENTRY REQUIREMENTS

A relevant BTEC HND with grades adding up to a minimum of 16 points (Merit =1 point; Distinction=2 points) or an equivalent HETAC qualification. Relevant independent work and professional work experience are also considered. All applicants must provide their latest qualification results and a link to an online showcase of work prior to their interview. The showcase should be curated to present only the strongest audio-visual work and can include scriptwriting samples (not full-length scripts), other short development work, photography, art, design and any other relevant material but edited to a selection of the candidate's strongest work. An employer's/college reference is essential, preferably one of each. All applicants should show an aptitude and commitment to the subject matter and to an intense independently-led year. Applications will be assessed based on grades, the showcase provided, reference/s and interview.

CAREER OPPORTUNITIES AND ACADEMIC PROGRESSION

This course provides students with the platform to enter many areas of the Film and Television Industry. Graduates have found employment in Ireland and abroad as Production Assistants, Camera Operators, Video Engineers, Production Design Trainees, Casting Agent Assistants, Sound Engineers, freelance Directors and Producers and in Post-Production. Some have also successfully set up their own production businesses. With the Level 8 BA (Hons) qualification, students can pursue postgraduate study in any third-level institution in Ireland or abroad.

APPLICATION PROCESS

A link on the college website from February/March each year will take applicants to the relevant application form in the University of Wolverhampton's website. Completed applications will be forwarded to CDCFE staff and course leaders for assessment. Applicants that meet the minimum entry requirements will be invited for interview.



Top-Up Degree in Animation

BA (Hons) Degree in Animation (Top-up)



This one-year Top-up Honours degree programme has been developed with the growing national Animation Industry and its impact at home and abroad in mind. The course is taught by industry professionals and features a number of visiting industry guest lecturers and workshops during the year.

These programmes are offered as part of our evening and day-time self-financing education provision. Learners will not qualify for a grant but they may qualify for other Social Welfare allowances. The cost of the programme will be €3,500, to be paid in three instalments. This course is Springboard funded meaning Springboard funding pays fees and allows students to keep some benefits.

The structure of the course involves twelve hours tuition over three evenings per week and two semesters of twelve weeks each. Access and facilities outside those hours will be provided for students to carry out project work on their own. This is an intense and self-directed programme where the students are encouraged to produce quality work that can compete at major festivals.

COURSE CONTENT

The main focus of the BA year is a major project. Four of the six modules feed into what is essentially a practical thesis project. It is self-directed work, chosen by the student according to his/her interests and strengths and with the guidance of course tutors.

CERTIFICATION

BA (Honours) from the University of Wolverhampton.

ENTRY REQUIREMENTS

Applicants will be expected to have a relevant BTEC HND with a minimum of ten Merits or an equivalent HETAC qualification. Applicants will be expected to submit online links to their Animation work from the last three years maximum prior to interview. Students who have completed a QQI Level 6 Animation will be considered if their work meets the criteria and standard for HND, and they have additional industry experience. If you are over 21, relevant work experience in Animation or in related fields will also be taken into consideration. Your work will be assessed based on portfolio and interview. An employer's/college reference is essential.



CAREER OPPORTUNITIES

Work in various areas of the growing national Animation Industry.

COLLEGE LINKS

With the BA Honours qualification, students can pursue postgraduate study in any third-level institution in Ireland or abroad.

APPLICATION PROCESS

Application forms will be available to download from the college website through a specific link from February each year. Applicants that meet the minimum entry requirements will be invited for interview.

Top-Up Degree in Drama

BA (Hons) Degree in Drama (Top-up)

Enhance your creative career opportunities and explore your full potential with a one-year BA Honours Top-up Degree in Drama.

Accredited by the University of Wolverhampton our (BA Hons) Drama course has been developed by industrial professionals to be relevant to our students.

Practically and creatively led, this course will be delivered on a part-time basis in our Killbarack campus with a minimum of twelve contact hours per week. The technical and performance elements of the course will take place primarily in the nearby Axis Theatre. The course requires full commitment from participants as self-directed learning is central to successful completion of the Top-up degree.

The course, which is taught by industry professionals, will develop learners' ability to engage creatively and effectively with the production of performance through a critical understanding of performance techniques, working methods and vocabulary. Students will be encouraged to engage in independent, critical thinking and to use imagination, creativity and organizational skills.

COURSE CONTENT

The programme is offered as part of our evening and day-time self-financing education provision.

The Top-up degree is self-financed by participants and costs €3,500 which will be paid in three instalments. Learners undertaking the programme will not qualify for a grant but may qualify for other Social Welfare allowances.

COURSE CHARGES

The programme is offered as part of our evening and day-time self-financing education provision.

The Top-up degree is self-financed by participants and costs €3,500 which will be paid in three instalments. Learners undertaking the programme will not qualify for a grant but may qualify for other Social Welfare allowances.

ENTRY REQUIREMENTS

Applicants will be interviewed and should hold a relevant HND with Merit/Distinction profile or equivalent qualification, as well as portfolio of work and experience. Mature students with relevant experience are welcome to apply. Academic or employer references are essential.

COURSE CONTENT

Modules: Contemporary Perspectives (Live Art Practice) Applied Theatre, Independent Production (Site Based and Immersive Theatre) Contemporary Contexts, Professional Project.

CERTIFICATION

BA (Honours) from the University of Wolverhampton.



Adults Returning to Education

Educational Opportunities for Unemployed Adults

Coláiste Dhúlaigh College of Further Education provides FREE full and part-time education and training opportunities for unemployed adults who want to up-skill, refresh skills, or enhance their education and job prospects.

Full-time vocational courses (VTOS) offer unemployed adults the opportunity to return to full-time education for FREE. Applicants over 21 and receiving one of the qualifying Social Protection payments for at least 6 months before starting the course qualify for VTOS while retaining their benefits. Participation in a CE or FAS scheme counts in the calculation of six months once applicants are on the relevant Social Protection payments immediately before starting the course.

Part-time Skills to Compete courses offer unemployed adults the opportunity to return to part-time education for FREE. Applicants receiving Social Protection payments immediately before starting the course qualify while retaining their benefits (*subject to funding). Skills to Compete is an initiative to support those who have lost their jobs as a result of COVID-19 and wish to re-enter the workforce.

All Return to Education full-time or part-time applicants will be given individual guidance by qualified tutors who are in a position to make recommendations as to what courses may suit their learning needs.

Please apply online at www.cdcfe.ie.

PART-TIME COURSES

QQI LEVEL 4

- ▶ English for Speakers of Other Languages (ESOL)
- ▶ Barbering
- ▶ Café and Deli Service Skills
- ▶ Pottery for Beginners
- ▶ QQI LEVEL 5
- ▶ Health Service Skills
- ▶ Early Childhood Care and Education

QQI LEVEL 5

- ▶ Health Service Skills
- ▶ Early Childhood Care and Education

FULL-TIME COURSES

QQI LEVEL 4

- ▶ General Learning

QQI LEVEL 5

- ▶ Community Development
- ▶ Craft

- ▶ Entrepreneurship in Creative Industries
- ▶ Physiotherapy Assistant - Health Service Skills
- ▶ Horticulture
- ▶ IT Technician
- ▶ Hairdressing
- ▶ Pre-primary School Teaching
- ▶ Creative Writing for Digital Media
- ▶ Fashion Design

QQI LEVEL 6

- ▶ Community Development
- ▶ Craft
- ▶ Early Childhood Care and Education
- ▶ Photography
- ▶ Tour Guiding
- ▶ Fashion Design

HND (Higher National Diploma)

- ▶ Interior Design

HNC (Higher National Certificate)

- ▶ Nutrition and Lifestyle Coaching

Some of the courses may be subject to change. All courses are QQI accredited and lead to a part or full QQI award. The Higher National Certificate is Pearson UK accredited.

The Back to Education Initiative (Part-time Programme) is funded by the Irish Government and part funded by the European Social Fund under the Human Capital Investment Operational Programme 2007-2013.



Coolock Darndale Adult Literacy Service

CDETb Adult Education Service provides free, part-time education to adults returning to learning. As part of that service, Coolock Darndale Adult Literacy Service is located in Coláiste Dhulaigh College of Further Education and offers free and confidential support in Spelling, Reading, Writing, Maths and Digital Skills.

You can learn at the level and pace that suits you, in a one-to-one lesson with a tutor or with a small group of like-minded adults. If you like, you can work towards certificates in subjects of your choice up to QQI Level 4 – the same level as Leaving Certificate. If you cannot attend in the college, we also have classes in Darndale Belcamp Village Centre or you can learn over the telephone.

Students with Coolock Darndale ALS join for lots of different reasons – to help their kids with homework, to learn how to use their mobile phone or a computer, or to get support to help succeed on another course that they are working towards.

The following skills are included in our programme:

- ▶ How to Use Your Mobile Phone
- ▶ How to Zoom
- ▶ Reading, Writing, Spelling, Maths
- ▶ Computers
- ▶ History and Genealogy
- ▶ Writing and digital skills for work
- ▶ Preparing for the Driver Theory Test
- ▶ English for Speakers of Other Languages

See our students work at: www.coolockals.ie

To find out what classes will work best for you, give us a call on 01-8487172.

Leah Skipton

Email: Leah.skipton@aes.cdetb.ie

Adult Literacy Organiser

Tel: 01 848 7172



Day and Evening Courses

PART-TIME PROGRAMME: FUNDED THROUGH SELF-FINANCING



While most of our programmes offered are full-time, we also have a range of course options for persons who wish to return to education on a part-time basis, day or evening. These courses are targeted at people who desire certification and/or specific interest/hobby courses which are offered in our self-financing FEPT: Part-time Day and Evening Programme.

Course Director: Pat Garvan

Tel (01) 848 1400

Email pgarvan@cdcfe.cdetb.ie

FEPT: Further Education Part-Time

COURSE LOCATION

Most part-time courses are based in the Coolock Campus. Do check your course location on enrolment.

PART-TIME DAY AND EVENING COURSES

FEPT @ CDCFE offers a stimulating range of part-time courses during the day and evening. These courses are designed to improve the student's competence and skills and to prepare for advancement in your journey in education and/or your career. Our part-time courses are also for those who wish to return to education for the enjoyment of learning itself and/or for social interaction. To aid course completion, course participants would need to have access to a computer and viable broadband should pandemic conditions continue into the academic year.

COMMUNITY INVOLVEMENT

A feature that the college is proud of is its proactive response to the national skills strategy and the educational needs of the local working population, community groups and the individual. Self-financing evening provision is now recognised in Solas's current FET Development Plan as a beneficial pathway towards meeting Ireland's skills needs. Our Part-Time Department welcomes any request for new courses from an individual or group of people. This will assist the CDCFE towards an agile and responsive provision.

APPLICATION

Applications for all courses should be made directly to CDCFE, Coolock campus only. You may apply by post, phone or by visiting the college. Application forms may be requested by email/post. The appropriate fee should accompany all postal application forms. Absolutely no cash accepted.

View our current FEPT brochure or visit the college website: www.cdcfe.ie/parttime for course costs and further details.

CERTIFICATION

For all certified courses please ensure you provide the college with: the name you wish to appear on your certificate; your gender; date of birth; PPS number and contact details [phone and address]. Courses preparing students for work with vulnerable persons require work experience and also a Nil Garda Vetting report as part of those programmes.

COURSE FEES

Course fees must be paid in full at enrolment. Cheques, postal orders and drafts should be made payable to the 'City of Dublin ETB.' Please do not send cash with postal applications.

Fees are only refunded where a class fails to form. Duration of term may be adjusted to suit demand. Partial fee waivers are available for some social welfare recipients - enquire at registration. Proof of PPS number and evidence of status is essential from the relevant state agency, a copy of which must accompany your fee waiver request at the time of enrolment.

Fees can now be paid online – by selecting 'Apply Now' on the college website. Available from August/September 2021.

See website for further details – www.cdcfe.ie/parttime.

CAR PARK

A supervised car park is available; however, cars are parked at owners' risk.

ENROLMENTS – BY POST OR PHONE

Open in September and January of each academic year. For enrolment details please see www.cdcfe.ie/parttime.

Community Development – VTOS

QQI Award Community Health Services Level 5 (5M4468)

Community Development Level 6 (6M3674)



VTOS gives unemployed adults over 21 the opportunity of returning to full-time education while retaining their benefits. See website for eligibility criteria.

This course is also available to those who are not VTOS eligible. A course charge will apply to those who are not VTOS eligible.

The course is designed to provide learners with an opportunity to develop and engage with a broad understanding of Community Development. Learners are invited to engage and develop the knowledge, skills and competencies required when working with people in an educational and Community Development environment. As well as undertaking work placements, participants are invited to engage in a variety of workshops and tutorials. Each workshop/tutorial has a particular focus which may be psychological, sociological, creative or practical. These sessions cover interpersonal skills, leadership, social issues, Community Development, and reflective practice. The skills developed on this course are transferable across many fields of work from Social Care to Business Management.

COURSE CONTENT

YEAR 1

Social Studies, Care of the Older Person, Human Growth and Development, Care Provision and Practice, Team Working, Combined Materials, Word Processing, Communications, Work Placement.

YEAR 2

Group Work Theory and Practice, Action Research, Community Development Theory, Community Development Practice, Arts in the Community, Person Centred Practice, Team Leadership, Work Experience, Social Analysis.

CERTIFICATION

QQI Level 5 and Level 6.

DURATION

Two years.



ENTRY REQUIREMENTS

VTOS applicants must be over 21 and in receipt of a Social Protection Payment for at least 6 months before the start date of the course. They can also be a Dependant Spouse of a person in receipt of a Social Protection Payment. Participation in a CE scheme counts in the calculation of the 6 months. Applicants who present for this course will be given individual guidance by qualified teachers, who are in a position to make recommendations as to which course may best suit their learning needs.

PROGRESSION

Successful candidates have gained places in first year of Universities such as Trinity College Dublin and National University of Ireland, Maynooth. Advanced entry options are accommodated on occasion to other higher level institutions such as Carlow IT and Institute of Technology Blanchardstown. Other graduates have gone on to work in the field of Community Development.

CAREER OPPORTUNITIES

This is an area of study that offers excellent career opportunities within education and the Community Development area.

HOW TO APPLY

Apply online at www.cdcfe.ie. For more information contact 01 831 4677 or email cdcfe.vtos@cdcfe.cdetb.ie

Craft – VTOS

QQI Award Creative Craft Level 5 (5M1981)
Art Level 6 (6M4029)

® Raheny

VTOS gives unemployed adults over 21 the opportunity of returning to full-time education while retaining their benefits. See website for eligibility criteria. This course is also available to those who are not VTOS eligible. A course charge will apply to those who are not VTOS eligible. The purpose of the course is to equip the learner with knowledge, skills and confidence to explore a range of different crafts with an emphasis on Further Education.

COURSE CONTENT

Ceramics, Jewellery, Printmaking, Drawing, Design Skills, Communications, Work Experience.

Workshops will be an important element of this course and will be facilitated by experts from various Craft Industries. Learners will enjoy regular trips to Art Galleries and Art Fairs.

CERTIFICATION

QQI Level 5, QQI level 6.

DURATION

Two years.

ENTRY REQUIREMENTS

VTOS applicants must be over 21 and in receipt of a Social Protection Payment for at least 6 months before the start date of the course. They can also be a Dependant Spouse of a person in receipt of a Social Protection Payment. Participation in a CE scheme counts in the calculation of the 6 months. Applicants who present for this course will be given individual guidance by qualified teachers, who are in a position to make recommendations as to which course may best suit their learning needs.



PROGRESSION

Successful candidates will have the opportunity to progress onto Further Education.

HOW TO APPLY

Apply online at www.cdcfe.ie. For more information contact

01 831 4677 or email cdcfe.vtos@cdcfe.cdetb.ie

Horticulture – VTOS

QQI Award Horticulture Level 5 (5M2586)



VTOS gives unemployed adults over 21 the opportunity of returning to full-time education while retaining their benefits. See website for eligibility criteria.

This course is also available to those who are not VTOS eligible. A course charge will apply to those who are not VTOS eligible.

This course is designed to incorporate both the theoretical and practical aspects of horticulture. Our course looks at production and amenity horticulture and includes elements of design and commercial awareness.

COURSE CONTENT

Plant Science, Soil Science, Fruit and Vegetable Production, Plant Propagation, Work Practice, Plant Identification and Plant Protection, Communications, Safety & Health at Work.

CERTIFICATION

QQI Level 5.

DURATION

One year.

ENTRY REQUIREMENTS

VTOS applicants must be over 21 and in receipt of a Social Protection Payment for at least 6 months before the start date of the course. They can also be a Dependant Spouse of a person in receipt of a Social Protection Payment. Participation in a CE scheme counts in the calculation of the 6 months. Applicants who present for this course will be given individual guidance by qualified teachers, who are in a position to make recommendations as to which course may best suit their learning needs.

PROGRESSION

Students may progress to Institutes of Technology. They may also pursue courses in Sports Turf Maintenance, Forestry, Tree Surgery, Landscaping and Landscape Design.

CAREER OPPORTUNITIES

Students may progress to Institutes of Technology. They may also pursue courses in Sports Turf Maintenance, Forestry, Tree Surgery, Landscaping and Landscape Design.

HOW TO APPLY

Apply online at www.cdcfe.ie. For more information contact 01 831 4677 or email cdcfe.vtos@cdcfe.cdetb.ie



General Learning – VTOS

QQI Award General Learning Level 4 (4M2010)

® Raheny

VTOS gives unemployed adults over 21 the opportunity of returning to full-time education while retaining their benefits. See website for eligibility criteria.

This course is also available to those who are not VTOS eligible. A course charge will apply to those who are not VTOS eligible.

General Learning offers a chance to enhance your knowledge and skills in a broad range of subjects in a friendly and supportive environment. Candidates who haven't completed Leaving Certificate take up this course to complete their schooling, to try new subjects at an accessible level, as a stepping stone to Further Education, to improve employment prospects and to gain confidence.

COURSE CONTENT

Mathematics, Communications, IT Skills, Personal Effectiveness, Work Experience, Intercultural Studies, Human Biology, Art, Drawing/Painting, Word Processing, Historical Studies.

CERTIFICATION

QQI Level 4.

DURATION

One year.

ENTRY REQUIREMENTS

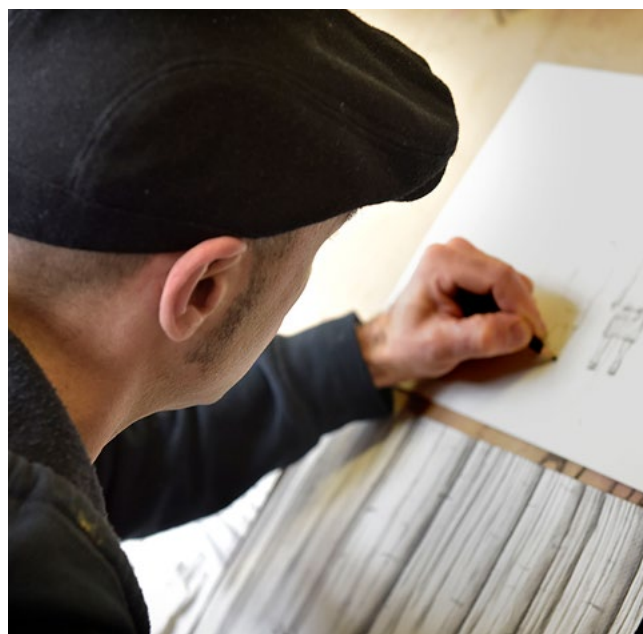
VTOS applicants must be over 21 and in receipt of a Social Protection Payment for at least 6 months before the start date of the course. They can also be a Dependant Spouse of a person in receipt of a Social Protection Payment. Participation in a CE scheme counts in the calculation of the 6 months. Applicants who present for this course will be given individual guidance by qualified teachers, who are in a position to make recommendations as to which course may best suit their learning needs.

PROGRESSION

Students who successfully complete the programme will be in a good position to progress onto Further Education. Many of our students have obtained places on Level 5 courses in the following areas: Computers, Healthcare, Childcare, Art and Design, Community Development, Science, Media, and Communications.

HOW TO APPLY

Apply online at www.cdcfe.ie. For more information contact 01 831 4677 or email cdcfe.vtos@cdcfe.cdetsb.ie



Nutrition and Lifestyle Coaching - VTOS

Higher National Certificate in Sport and Exercise (Exercise, Health, and Lifestyle)



VTOS gives unemployed adults over 21 the opportunity of returning to full time education while retaining their benefits. See website for eligibility criteria.

This course is also available to those who are not VTOS eligible. A course charge will apply to those who are not VTOS eligible.

This course is designed to equip the learner with the necessary skills to work as an independent Nutrition and Lifestyle coach. It is designed for those wishing to coach individuals and groups towards long term diet and lifestyle changes for improved health and wellbeing. The course will combine scientific theory-based learning along with its practical application.

In addition to the mandatory modules, students will be given the opportunity to become certified first aid responders. A qualification from ITEC in Holistic Massage will also be offered.

COURSE CONTENT

Nutrition, Psychology, Professional Skills, Physical Activity, Lifestyle and Health, Lifestyle Coaching, Health Education in Action, Anatomy and Physiology for Health and Ill Health.

CERTIFICATION

BTEC Higher National Certificate in Sport and Exercise (Exercise, Health and Lifestyle).

DURATION

One year.

ENTRY REQUIREMENTS

VTOS applicants must be over 21 and in receipt of a Social Protection Payment for at least 6 months before the start date of the course. They can also be a Dependant Spouse of a person in receipt of a Social Protection Payment. Participation in a CE scheme counts in the calculation of the 6 months. Applicants who present for this course will be given individual guidance by qualified teachers, who are in a position to make recommendations as to which course may best suit their learning needs.



CAREER OPPORTUNITIES

On completion of this course, students can commence a career as a Nutrition and Lifestyle Coach. The HNC can be combined with further study to attain a Higher National Diploma.

HOW TO APPLY

Apply online at www.cdcfe.ie.

For more information contact 01 831 4677

or email cdcfe.vtos@cdcfe.cdetb.ie

Professional Floristry - VTOS

QQI Award Floristry Level 5 (5M2686)

® Raheny

VTOS gives unemployed adults over 21 the opportunity of returning to full-time education while retaining their benefits. See website for eligibility criteria.

This course is also available to those who are not VTOS eligible. A course charge will apply to those who are not VTOS eligible.

The course will provide learners with the skills needed to create and arrange floral displays for many occasions including birthdays, Christenings, anniversaries, weddings and other special occasions.

COURSE CONTENT

Floriculture, Retail Display, Retail Floristry, Work Experience, Communications, Start Your Own Business, Retail Selling, Design Skills.

DURATION

One year.

ENTRY REQUIREMENTS

All VTOS applicants must be 21 or over and in receipt of or a dependent of a Social Protection payment for at least 6 months before starting the course. Participation in a CE or FAS scheme counts in the calculation of six months if you are in receipt of a relevant Social Protection payment immediately before starting the course. All applicants who present for this course will be given individual guidance by qualified tutors who are in a position to make recommendations as to what courses may suit their learning needs.

CERTIFICATION

QQI Level 5 in Floristry.

CAREER OPPORTUNITIES

Successful students can expect to work in florists or garden centres designing flower and plant displays or start their own floristry business.



Pottery for Beginners – Skills to Compete

QQI Award Level 4 PART AWARD

® Raheny



Skills to Compete courses offer unemployed adults the opportunity of returning to part-time education while retaining their benefits. They are an initiative offering support to those who have lost their jobs as a result of COVID-19 and who wish to re-enter the workforce.

Pottery for Beginners is a 2 to 3 day per week part-time Skills to Compete course. The course aims to provide training, up-skilling and confidence to learners, enabling them to establish the various skills required to create three-dimensional work - it includes learning how to throw on the wheel, slab building, coiling, press moulding, etc. and to develop skills in a relaxed and friendly environment. All materials are provided.

COURSE CONTENT

QQI Level 4 Part Award.

Ceramics (Level 5), Information Technology Skills (Level 4), Workplace Safety (Level 4).

CERTIFICATION

QQI Level 4 PART AWARD.

DURATION

One year part-time course (Autumn – May) *

2 to 3 days in fully equipped studio.

ENTRY REQUIREMENTS

All applicants must be in receipt of or a dependent of a Social Protection payment before starting the course. Participants on CE schemes or TUS may apply also. All students who present for this course will be given individual guidance by qualified tutors who are in a position to make recommendations as to what courses may suit their learning needs.

PROGRESSION

Successful learners may progress on to Craft Production Level 5 or Further Education.

CAREER OPPORTUNITIES

This is an area of study that offers excellent career opportunities in cottage industry, tourism, retail, etc.

*Subject to change

HOW TO APPLY

Apply online at www.cdcfe.ie

Skills to Compete courses offer unemployed adults the opportunity of returning to part-time education while retaining their benefits. They are an initiative offering support to those who have lost their jobs as a result of COVID-19 and who wish to re-enter the workforce.

ESOL is a one-year part-time Skills to Compete course usually delivered over two days per week. The course has been designed to suit the needs of those wishing to improve their English language skills in order to gain employment or progress into Further Education and third level here in Ireland. It aims for students to become independent users of the language. By the end of this course students will have reached an Intermediate level and be able to express themselves on a range of topics, both in writing and verbally.

The course is entirely given over to the study of the English language, and at the end of the academic year, depending on English level, students will have the opportunity to take a Cambridge English Language examination in one of their local centres.

COURSE CONTENT

English as a Second Language (ESOL).

CERTIFICATION

Cambridge Suite of ESOL examinations.

DURATION

One-year part-time course (Autumn to May).

ENTRY REQUIREMENTS

All applicants for this course must be at an intermediate level A2 to B2 CEFR*. The learner's level of English will be determined by a written test and interview.

All applicants must be engaging or a dependent engaging with the Department of Employment Affairs and Social Protection (DEASP). Those either in receipt of a Social Protection Payment, signing for credits, on a scheme such as CE or TUS, or have refugee status may apply.

Anyone who is interested in an ESOL course but is not eligible to participate on the ESOL course are invited to email esol@cdcfe.cdetb.ie indicating their expression of interest and contact details.

All expressions of interest will be given individual guidance by qualified tutors who are in a position to make recommendations as to alternative ESOL fee-paying courses that will suit their learning needs.

PROGRESSION

Successful learners may progress into Further Education and third level here in Ireland.

CAREER OPPORTUNITIES

This area of study will enhance students' career opportunities.

HOW TO APPLY

Apply online at www.cdcfe.ie



Café and Deli Service Skills – Skills to Compete

QQI Award (Level 4 - 4M2805)



Skills to Compete courses offer unemployed adults the opportunity of returning to part-time education while retaining their benefits. They are an initiative offering support to those who have lost their jobs as a result of COVID-19 and who wish to re-enter the workforce.

Café and Deli Service Skills is a 3 day a week part-time SKILLS TO COMPETE course. The course aims to provide training, up-skilling and confidence to learners enabling them to have the basic skills, foundation and knowledge to further a career in an exciting and fast paced industry. It offers participants the opportunity to learn various skills required enabling them to take up meaningful employment in the area of restaurant, hotel and catering. All materials provided.

COURSE CONTENT

QQI Level 4 Part Award.

Short Order Cooking, Kitchen Skills, HACCP, Work Experience, Barista Training, Customer Service*

(*Subject to change)

CERTIFICATION

QQI Level 4 PART AWARD.

DURATION

One-year part-time course (Autumn – May). 3 days per week.

ENTRY REQUIREMENTS

All applicants must be in receipt of or a dependent of a Social Protection payment before starting the course. Participants on CE schemes or TUS may apply also. All individuals who present for this course will be given individual guidance by qualified tutors who are in a position to make recommendations as to what courses may suit their learning needs.

PROGRESSION

Successful learners may progress on to Level 5 or Further Education. Another option available is to pursue further studies in the Catering or Tourism area.

CAREER OPPORTUNITIES

This is an area of study that offers excellent career opportunities in the catering sector, coffee shops, delicatessens, hospitals, schools, hotels and restaurants.

HOW TO APPLY

Apply online at www.cdcfe.ie

Health Service Skills – Skills to Compete

QQI Award (Level 5 – 5M3782)



Skills to Compete courses offer unemployed adults the opportunity of returning to part-time education while retaining their benefits. They are an initiative offering support to those who have lost their jobs as a result of COVID-19 and who wish to re-enter the workforce.

This is a first year of a two year part-time Skills to Compete course. The course aims to offer training, up-skilling and confidence to learners enabling them to take up meaningful work in the area of Health Care. Another option available is to pursue further studies in the Health Care area.

COURSE CONTENT

YEAR 1 - QQI Level 5 Part-time *

Safety and Health at Work, Care Skills, Infection Prevention and Control, Care of the Older Person.

YEAR 2 - QQI Level 5 Part-time *

Care Support, Personal Professional Development OR Work Experience, along with two elective modules selected from the following list:

- ▶ Physiotherapy Assistant Theory
- ▶ Physiotherapy Assistant Practice
- ▶ OR
- ▶ Occupational Therapy Assistant Theory
- ▶ Occupational Therapy Assistant Practice
- ▶ OR
- ▶ Child Health and Wellbeing
- ▶ Palliative Care

*Subject to change

CERTIFICATION

QQI Level 5

DURATION

2-year part-time programme (Autumn – May)

ENTRY REQUIREMENTS

All applicants must be in receipt of or a dependent of a Social Protection payment before starting the course. Participants on CE schemes or TUS may also apply. All students who present for this course will be given individual guidance by qualified tutors who are in a position to make recommendations as to what courses may suit their learning needs. Students must apply for Garda Clearance.

PROGRESSION

Successful learners may progress on to Level 6 or Further Education.

CAREER OPPORTUNITIES

This is an area of study that offers excellent career opportunities in the Health Service sector.

HOW TO APPLY

Apply online at www.cdcfe.ie



Early Childhood Care and Education- Skills to Compete

QQI Award Early Childhood Care and Education Level 5 (5M2009)

® Raheny



QQI Award (Level 5 – 5M2009)

Skills to Compete courses offer unemployed adults the opportunity of returning to part-time education while retaining their benefits. They are an initiative offering support to those who have lost their jobs because of COVID-19 and who wish to re-enter the workforce.

This is the first year of a two-year part-time Skills to Compete course. The course aims to offer training, up-skilling and confidence to learners enabling them to take up meaningful work in the area of Childcare. Another option available is to pursue further studies in the Childcare area.

COURSE CONTENT

YEAR 1 - QQI Level 5 Part time*.

Early Care and Education Practice, Early Childhood Education and Play, Safety and Health at Work, Special Needs Assisting.

YEAR 2 - QQI Level 5 Part time*.

Child Development, Child Health and Well Being, Work Experience, Customer Service.

* Subject to change

CERTIFICATION

QQI Level 5 Major Award.

DURATION

Two-year part-time programme.

ENTRY REQUIREMENTS

All applicants must be in receipt of or a dependent of a Social Protection payment before starting the course. Participants on CE schemes or TUS may apply also. Individuals who present for this course will be given individual guidance by qualified tutors who are in a position to make recommendations as to what courses may suit their learning needs. Students must apply for Garda Vetting at interview.

PROGRESSION

Successful learners may progress on to Level 6 or Further Education.

CAREER OPPORTUNITIES

This is an area of study that offers excellent career opportunities in the Childcare sector.

HOW TO APPLY

Apply online at www.cdcfe.ie

Barista Skills – Skills to Compete

QQI Part Award and City and Guilds Part Award

® Raheny



Skills to Compete courses offer unemployed adults the opportunity of returning to part-time education while retaining their benefits. They are an initiative offering support to those who have lost their jobs as a result of COVID-19 and who wish to re-enter the workforce.

This course will provide the learners with specialist skills and knowledge in one of the major growth areas of the hospitality industry – the beverage sector. The course is aimed at all first line operatives where coffee is served – this includes coffee bars, coffee houses, cafes, hotels and restaurants.

Learners will be introduced to the full range of products used in making beverages. They will learn where the products come from and some of the processes they go through, from growing to the final drink. They will also learn the importance of taking care of the products in order to provide an excellent final result.

The course will provide the learners with the ability to understand the importance of good food hygiene and recognise the various different types of health issues that poor food hygiene may cause.

COURSE CONTENT

Food Safety and HACCP, Manual Handling, Barista Skills.

*Subject to change

COURSE DURATION

This course will run for 6 - 8 weeks

ENTRY REQUIREMENTS

All applicants must be in receipt of or a dependent of a Social Protection payment before starting the course. Participants on CE schemes or TUS may apply also.

HOW TO APPLY

Apply online at www.cdcfe.ie

Tour Guiding – Skills to Compete

QQI Award Tour Guiding Level 6 (6S20232)



Skills to Compete courses offer unemployed adults the opportunity of returning to part-time education while retaining their benefits. They are an initiative offering support to those who have lost their jobs as a result of COVID-19 and who wish to re-enter the workforce.

The Skills to Compete National Tour Guide QQI Level 6 Special Purpose course gives individuals access to further education and training delivered by Coláiste Dhúlaigh College of Further Education.

This 12-week course is tailored to provide the skills, knowledge and competencies to deliver and manage a comprehensive tour management and guiding service for tourists visiting and travelling in Ireland.

COURSE CONTENT

The National Tour Guide course is relevant, practical and responsive to industry needs.

There are three modules:

- ▶ Irish Tour Guiding
- ▶ Irish Natural Heritage & Culture
- ▶ National Tour Management

We also offer IT Skills Support as part of the course.

(*Subject to change)

CERTIFICATION

QQI Level 6 Special Purpose award in National Tour Guiding (6S20232) and will automatically qualify for the Fáilte Ireland National Tour Guide Badge.

COURSE DURATION

12 week course

Monday & Friday *

*subject to change and adequate numbers enrolled.

COURSE CHARGES

Tour Guide BTEI Course Level 6 – Free for applicants eligible for Skills to Compete, fees will apply otherwise.



ENTRY REQUIREMENTS

All Skills to Compete applicants must be in receipt of or a dependent of a Social Protection payment before starting the course. Participants on CE schemes or TUS may also apply.

PROGRESSION

Successful learners may progress on to Level 6 or Further Education.

HOW TO APPLY

Apply online at www.cdcfe.ie

General Learning - Skills to Compete

QQI Level 4 (4M2010)

® Raheny

Skills to Compete courses offer unemployed adults the opportunity of returning to part-time education while retaining their benefits. They are an initiative offering support to those who have lost their jobs as a result of COVID-19 and who wish to re-enter the workforce.

General Learning offers a chance to enhance your knowledge and skills in a broad range of subjects in a friendly and supportive environment. Candidates who haven't completed Leaving Certificate take up this course to complete their schooling, to try new subjects at an accessible level, as a stepping stone to further education, to improve employment prospects and to gain confidence.

COURSE CONTENT

Mathematics, Communications, IT Skills, Personal Effectiveness, Work Experience, Human Biology, Drawing/Painting, Word Processing.

(*Subject to change)

CERTIFICATION

QQI Level 4.

DURATION

One-year.

ENTRY REQUIREMENTS

All applicants must be in receipt of or a dependent of a Social Protection payment before starting the course. Participants on CE schemes or TUS may apply also. All students who present for this course will be given individual guidance by qualified tutors who are in a position to make recommendations as to what courses may suit their learning needs.

PROGRESSION

Students who successfully complete the programme will be in a good position to progress onto further education. Many of our students have obtained places on Level 5 courses in the following areas: Computers, Healthcare, Childcare, Art & Design, Community Development, Science, Media & Communications.

HOW TO APPLY

Apply online at www.cdcfe.ie



Traineeship in Manufacturing, Supply Chain and Customer Service Logistics – Work Based Learning

® Raheny

This traineeship is 30 weeks duration and offers real commercial work placement with leading local industries. The course offers a QQI Level 4/5-part award and provides training in Forklift Truck licence, Manual Handling, Lean Manufacturing and First Aid Responder training. The main feature of the programme is a 12-week work placement with our Host Industry partners where the students gain valuable insight to a specific industry and relevant practical experience.

COURSE STRUCTURE

- ▶ 16 weeks college-based learning.
- ▶ 12 weeks industry placement.
- ▶ 2 weeks external training.

COURSE CONTENT

Warehousing, Customer Service, Safety and Health in the Workplace, Personal Effectiveness, Work Practice, and Functional Maths, IT Skills.

Training Certifications in Pallet, Reach and Counterbalance Forklift Truck licence, Manual Handling, Lean Manufacturing, and First Aid Responder.

ALLOWANCE

10 euro per day to cover travel expenses while on work placement.

HOW TO APPLY

Apply online at www.cdcfe.ie



National Hairdressing Apprenticeship (NHA) – Work Based Learning

QQI AWARD (LEVEL 6)



Coláiste Dhúlaigh College of Further Education is a collaborating provider that delivers the new National Hairdressing Apprenticeship (NHA).

All Hairdressing Apprentices must be employed full-time by a range of hairdressing salons which are approved by a Senior Training Advisor / SOLAS Authorised Officer.

This NHA is a blend of on-the-job learning that will take place within the salon and off-the-job education and training on a day release in Coláiste Dhúlaigh College of Further Education.

COURSE CONTENT

This three-year (minimum) apprenticeship programme is aimed to individual who wish to pursue a career in hairdressing. The NHA programme aims to ensure that theoretical learning in an education or training institution is reinforced by the practical experience of undertaking a real job and equips the participant to absorb workplace culture and business processes while honing employability skills.

CERTIFICATION

The programme leads to a Level 6 Advanced Certificate in Hairdressing awarded by Quality and Qualifications Ireland (QQI).

ENTRY REQUIREMENTS

Full time employment with a salon registered under the National Hairdressing Apprenticeship scheme.

QQI Level 4 major award or equivalent or two years full-time experience in a hairdressing salon.

Where English is not your first language a B2 Oxford level of English is required.

CAREER OPPORTUNITIES

On successful completion you will be able to work as a qualified hairdresser with a nationally and internationally recognised qualification. Fully qualified hairdressers will be able to demonstrate an extensive range of skills and services; from styling, colouring and cutting hair to performing scalp treatments, and will have nationally and internationally recognised qualifications.



PROGRESSION

There are many routes for progression within the industry itself but a Level 6 award also opens up the opportunity to do a Level 7 (bachelor degree) in areas such as business management.

HOW TO APPLY

Applicants Contact:

info@hairdressingapprenticeship.ie

Employers Contact:

Suzanne Kiely

National Hairdressing Apprenticeship

Programme Co-ordinator

info@hairdressingapprenticeship.ie

061 487940

Skills to Compete courses offer unemployed adults the opportunity

Skills to Advance Training programmes

– Work Based Learning



Coláiste Dhúlaigh College of Further Education is delivering highly subsidised upskilling and reskilling opportunities for employees and/ or Employers through the Government funded Skills to Advance initiative. The training aims to support enterprises to invest in and develop their workforce to adapt to changes in technology, markets, and work practices.

WHY SKILLS TO ADVANCE? - FOR EMPLOYERS

- ▶ Accessible training opportunities which fit in around your business and work schedules
- ▶ Training relevant to your business needs
- ▶ Courses that respond to the changing nature of jobs and skills
- ▶ Supports business growth.
- ▶ Develops your work force
- ▶ Helps retain and recruit employees
- ▶ Increases productivity and Competitiveness

CERTIFICATION

The programme leads to a Level 6 Advanced Certificate in Hairdressing awarded by Quality and Qualifications Ireland (QQI).

WHO IS SKILLS TO ADVANCE SUITABLE FOR?

Employees:

- ▶ In lower skilled Jobs
- ▶ Who are 50 and over
- ▶ In an Industry at risk of displacement or with emerging opportunities.

COURSES AVAILABLE

- ▶ Bespoke courses designed for the needs of SMEs
- ▶ Health Care Skills
- ▶ Health and Safety at Work
- ▶ Digital Skills
- ▶ Supervisory Management

CERTIFICATION

QQI Level 5 or QQI Level 6

DURATION

Courses can range from 4 weeks, 6 weeks to 12 weeks in duration.

ALLOWANCE

10 euro per day to cover travel expenses while on work placement.

HOW TO APPLY

Apply online at www.cdcfe.ie or email audrey.manning@cdcfe.cdetb.





Course Progression Chart 2022/2023

Business and Tourism

Programme	Duration	Award Body	Level	Progression
Certificate in Business Studies	Two years	QQI	6	DCU Bachelor of Business Studies (DC 111) NCI BA (Hons) Business NCI BA (Hons) Human Resource Management NCI BA (Hons) Marketing Practice
Tourism with Marketing	Two years	QQI	6	TU Dublin Tourism and Digital Marketing Level 8 TU953 TU Dublin Tourism Management Level 7 TU 747

Art and Design

Programme	Duration	Award Body	Level	Progression
Architectural Technology	One year	QQI	5	See course page for details of progression routes.
Art and Design Portfolio Preparation	One year	QQI	5	See course page for details of progression routes.
Fashion Design	Two years	BTEC	6	See course page for details of progression routes..
Graphic Design	One year	QQI	5	Advanced entry to TU Dublin.
	Two years	BTEC	6	Final year entry to Honours Degree Programmes in University of Wolverhampton and University of Ulster. See course page for details of progression routes..
Interior Design	Two years	BTEC	6	Advanced entry to TU Dublin.
				See course page for details of progression routes.
Illustration and Storytelling	One year	QQI	6	NCAD, DLIAT, TU Dublin See course page for details of progression routes.

- ▶ QQI - Further Education and Training Awards Council
- ▶ QQI LINKS – Details of specific linked courses and module requirements should be checked at www.QQI.ie.
- ▶ UOW - University of Wolverhampton
- ▶ CDETb- City of Dublin Education and Training Board

- ▶ ROA - Record of Achievement
- ▶ HND - Higher National Diploma (equivalent to level 6+ on NQAI framework)

A student may be required to study designated modules.

Course Progression Chart 2022/2023

Media

Programme	Duration	Award Body	Level	Progression
Creative Writing for Digital Media	One year	QQI	5	Entry to Media courses listed below (subject to results and interview). See course page for details of progression routes.
Media Production - Television and Sound	Three years	BTEC	6	Entry to a one year Top-Up Degree in CDCFE (subject to results and interview). Advanced entry to Honours Degree Programmes in UK Universities. See course page for details of progression routes.
Film Production	Two years	BTEC	6	Entry to a one year Top-Up Degree in CDCFE (subject to results and interview). Advanced entry to Honours Degree Programmes in UK Universities. See course page for details of progression routes.
Journalism	Two years	BTEC	6	Entry to a one year Top-Up Degree in CDCFE (subject to results and interview). See course page for details of progression routes.
Animation	One year Two years	QQI BTEC	5 6	Entry to a one year Top-Up Degree in CDCFE (subject to results and interview). Advanced entry to Honours Degree Programmes in UK Universities. See course page for details of progression routes.
Photography	One year	QQI	6	Entry to Degree Programmes in Ireland. See course page for details of progression routes.
Social Media Influencer	One year	QQI	5	Entry to Media courses listed above (subject to results and interview). See course page for details of progression routes.

Course Progression Chart 2022/2023

Performing Arts and Hairdressing

Programme	Duration	Award Body	Level	Progression
Performing Arts	Two years	BTEC	6	Entry to a one year Top-Up Degree in CDCFE (subject to results and interview). See course page for details of progression routes.
Hairdressing Pre-Apprenticeship	One year	QQI	5	See course page for details of progression

Science and Technology

Programme	Duration	Award Body	Level	Progression
Computer Science	Two years	QQI	6	Advanced Entry to Computer Science Honours Degree TU Dublin, Computer Science Year 2 TU Dublin and NCI. See course page for details of progression routes.
Computer Networking Technologies	Two years	QQI	6	Advanced entry TU Dublin. See course page for details of progression routes.
Biotechnology	Two years	BTEC	6	Advanced entry to 3rd year Biomedical Science Sligo IT and 2nd year Biosciences (Level 7) in TUD. See course page for details of progression routes.
Preliminary Engineering	One year	QQI	5	TU Dublin, Engineering. See course page for details of progression routes.
Pre-University Science	One year	CDET B	--	Selected science courses in DCU and TU Dublin. See course page for details of progression routes.
Engineering Technology	One year	QQI	5	See course page for details of progression routes.
Pre-University Science (Lab. Techniques)	One year	QQI	5	See course page for details of progression routes.
Neurodiversity Access to IT	One year	QQI	5	TU Dublin, NCI. See course page for details of progression routes.

Course Progression Chart 2022/2023

Social Care and Outdoor Adventure

Programme	Duration	Award Body	Level	Progression
Outdoor Adventure Management	Two years	BTEC	6	Advanced entry to Galway/Mayo IT and IT Tralee.
Social Care	Two years	QQI	6	Advanced entry into the 2nd year of The Open Training College BA in Social Care
Early Childhood Care and Education	Two years	QQI	6	Entry to Year 2, NCI part-time Childcare degree. See course page for details of progression routes.
Youth Activities Worker	One year	QQI	5	See course page for details of progression routes.
Pre-primary School Teaching	One year	QQI	5	See course page for details of progression routes.

Health Science

Programme	Duration	Award Body	Level	Progression
Health Science (Pre-nursing)	One year	QQI	5	DCU, UCD, UCC, Trinity College, Dundalk IT, Galway/Mayo IT, IT Tralee, Letterkenny IT, NUI Galway, St Angela's college, University of Limerick, Waterford IT, Athlone IT, DCU, Maynooth, UCD, DIT, TUD.
Physiotherapy Assistant (Health Service Skills)	One year	QQI	5	Entry to various universities in UK; including BSc in Sport & Rehabilitation Therapy at University of Sunderland (entry based on completion of QQI level 5 and success at interview). Entry to various universities in the Netherlands.
Health and Safety	One year	QQI	5	NUI Maynooth, TU Dublin and Sligo. See course page for details of progression routes.
Occupational Therapy Assistant	One year	QQI	5	Entry to BSc in Occupational Therapy in University of Sunderland (based on success at interview).
Pre-University Sports Science	One year	QQI	5	Direct entry to year two of BSc in Sport and Exercise Science, BSc in Sports Coaching, BSc in Nutrition, Exercise & Health all at University of Sunderland.
Nutrition and Lifestyle Coaching	One year	BTEC	5	Progression to HND (year 2) in Nutrition and Lifestyle Coaching at Coláiste Dhúlaigh CFE
Speech and Language Therapy Assistant	One year	QQI	5	See course page for details of progression routes.

All courses are funded by the Department of Education and Skills through the National Development Plan and City of Dublin Education and Training Board.

The Back to Education Initiative (Part-Time Programme) is funded by the Irish Government and part funded by the European Social Fund under the Human Capital Investment Operational Programme 2007-2013.

PLC COURSES

Animation	23
Architectural Design and Technology	13
Art and Design Portfolio Preparation	12
Pre-University Business Studies	8
Computer Networking Technologies	31
Computer Science	30
Creative Writing for Digital Media	18
Early Childhood Care and Education	37
Engineering Technology (Pre-Apprenticeship)	32
Fashion Design	14
Film Production	20
Graphic Design (Visual Communications) HND	15
Hairdressing Pre-Apprenticeship	26
Interior Design – 3D Design	16
Journalism and Podcasting	21
Journalism and New Media	22
Media Production – Television and Sound	19
Occupational Therapy Assistant	43
Office IT Skills	11
Outdoor Adventure Management	41
Performing Arts	29
Photography	24
Physiotherapy Assistant (Health Service Skills)	46
Preliminary Engineering	33
Pre-Primary School Teaching	39
Pre-University Science (DCU access course)	34
Pre-University Science(Pre-University Lab.Techniques	35
Social Care	36

Social Media Influencer	25
Speech and Language Therapy Assistant	49
Sport, Health and Lifestyle Coaching	48
Tour Guiding	09
Tourism with Marketing	07
Youth Activities Worker	38

TOP-UP DEGREE COURSES

Animation	53
Drama	54
Film and Television Production	51

VTOS COURSES

Community Development	59
Craft	60
General Learning	62
Horticulture	58
Nutrition and Lifestyle Coaching	63
Professional Floristry	64

SKILLS TO COMPETE COURSES

Barista Skills	70
Café and Deli Service Skills with Barista	67
Early Childhood Care and Education	69
English for Speakers of Other Languages (ESOL)	66

Index (continued)

General Learning	72
Health Service Skills	68
Pottery for Beginners	65
Tour Guiding	71

WORK BASED LEARNING COURSES

Hairdressing Apprenticeship	74
Skills to Advance Training Programme	75
Traineeship in Manufacturing, Supply Chain and Customer Service Logistics	73



COOLOCK CAMPUS:

Barryscourt Road, Coolock,
Dublin 17.
Eircode: D17 KH66
Tel: 01 848 1400
Email: coolock@cdcfe.cdetb.ie



RAHENY CAMPUS:

Springdale Road, Raheny,
Dublin 5.
Eircode: D05 XN65
Tel: 01 831 4677
Email: raheny@cdcfe.cdetb.ie



KILBARRACK CAMPUS:

Briarfield Villas, Kilbarrack,
Dublin 5.
Eircode: D05 NR25
Tel: 01 832 2735
Email: kilbarrack@cdcfe.cdetb.ie



MALAHIDE SAILING CENTRE:

Broadmeadows,
Malahide,
Co. Dublin
Contact Coolock Campus